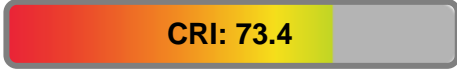


Light efficiency:



Output: 7989 lm

Light quality:



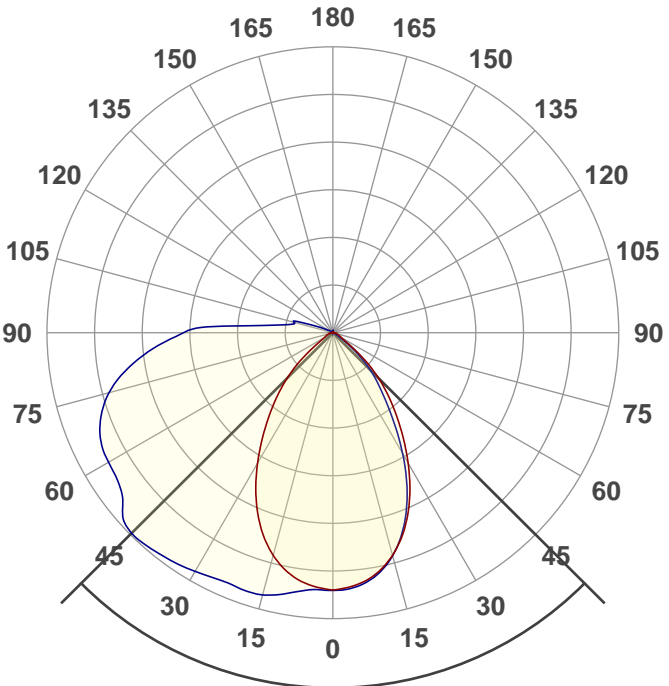
Peak: 3765 cd

Color temperature:



Power: 60.5 W

PF: 0.99



Product name:
WPRCCT-SW3B60-WST1-BRP

Light Head Aiming:
**rear in default position,
facing straight down;
front rotated up 60°,
facing outward**

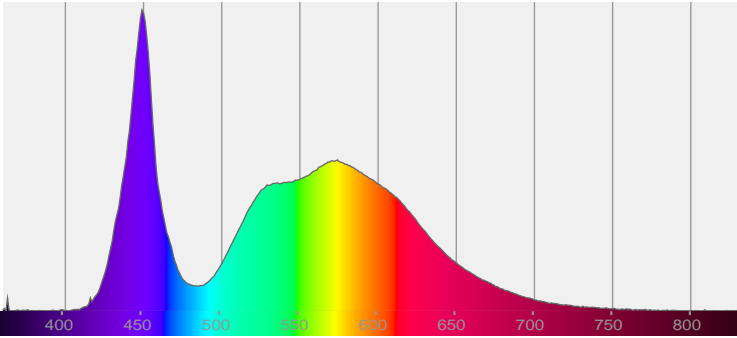
Date and time:
3/9/2021 9:39:38 AM

Beam angle **90.2°**

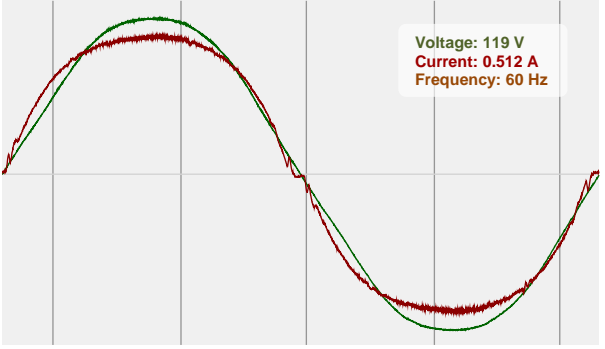


CIE 1931
x: 0.333
y: 0.333

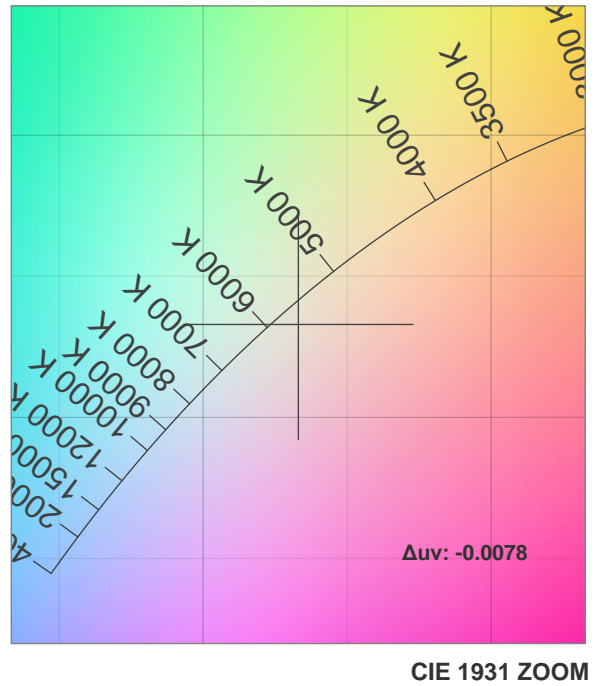
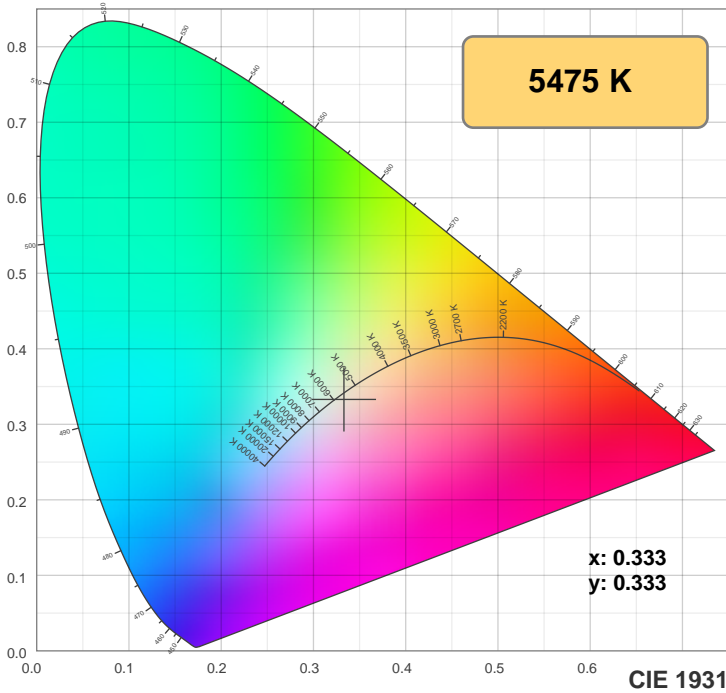
Spectra



Power

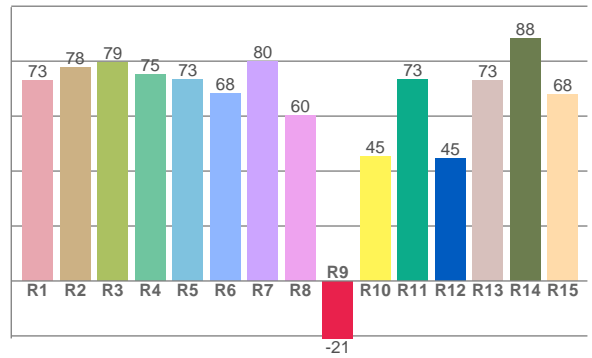
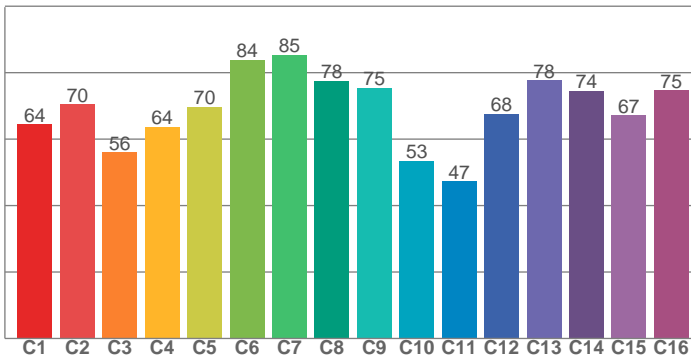


Color Specifications



TM30: 68.6

CRI: 73.4 (R1-R8)



CRI R values, only R1-R8 are used to calculate final CRI value

R1	R2	R3	R4	R5	R6	R7	R8	R9	R10	R11	R12	R13	R14	R15
72.9	77.7	79.4	75.2	73.4	68.4	79.9	60.4	-20.9	45.3	73.2	44.5	73.1	88.2	68.1

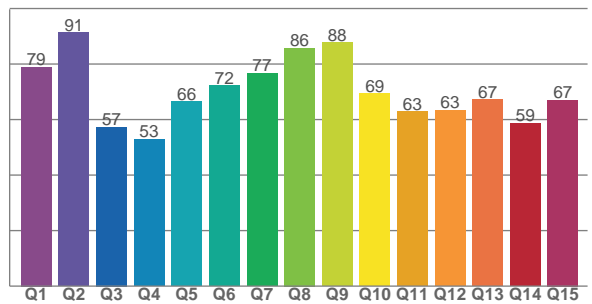
TM30 C values, 16 binned values out of total of 99 C values

C1	C2	C3	C4	C5	C6	C7	C8	C9	C10	C11	C12	C13	C14	C15	C16
64.4	70.5	56.0	63.7	69.7	83.8	85.4	77.6	75.5	53.4	47.3	67.7	77.7	74.5	67.2	74.6

CQS Q values

Q1	Q2	Q3	Q4	Q5	Q6	Q7	Q8	Q9	Q10	Q11	Q12	Q13	Q14	Q15
78.9	91.3	57.3	52.9	66.4	72.2	76.7	85.7	87.8	69.3	62.8	63.4	67.2	58.7	67.1

CQS: 68.5



Color parameters

Color temperature	Color rendering index	Red component	Color fidelity	Color gamut	Color quality scale	Color coordinate cie 1931	Color coordinate cie 1931	Color coordinate	Color coordinate	Color division from black body
CCT	CRI	CRI R9	TM30 Rf	TM30 Rg	CQS	x	y	u	v	Δuv
5475 K	73.4	-20.9	68.6	95.5	68.5	0.333	0.333	0.210	0.316	-0.0078

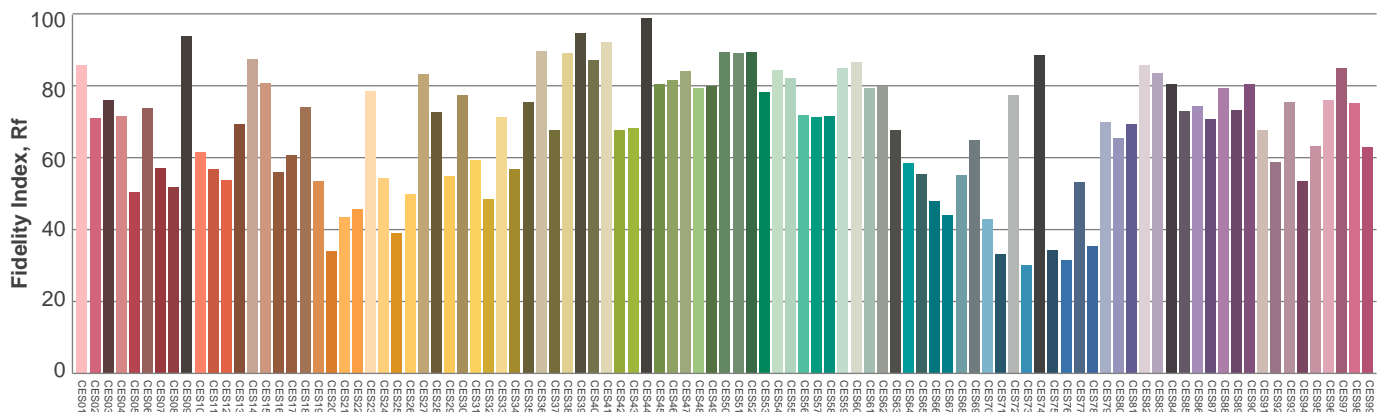
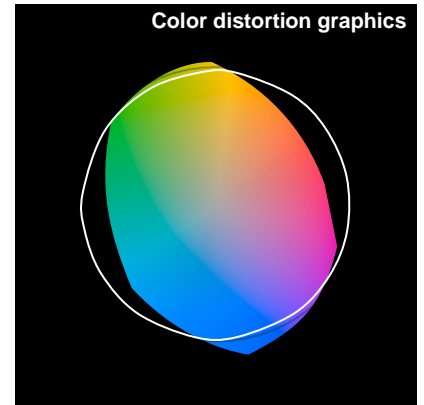
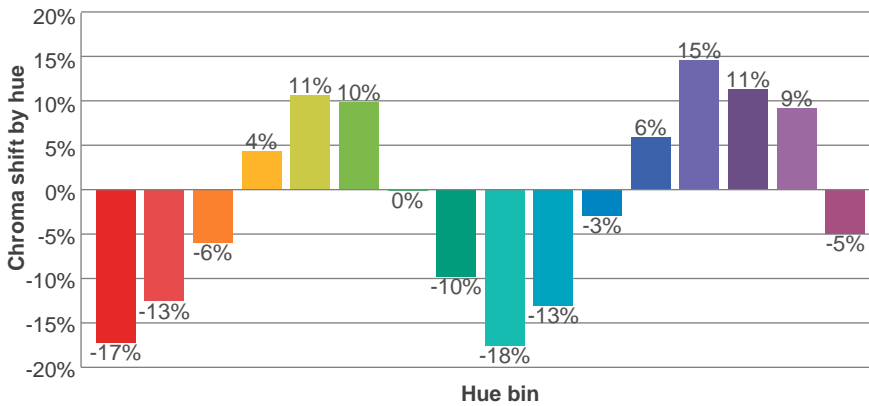
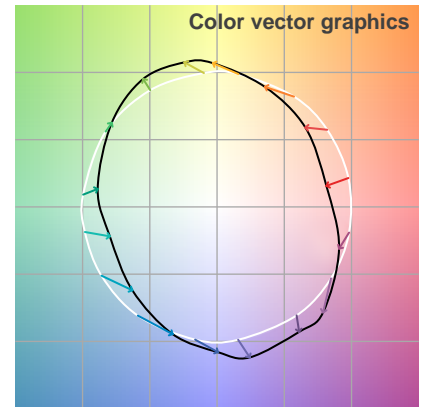
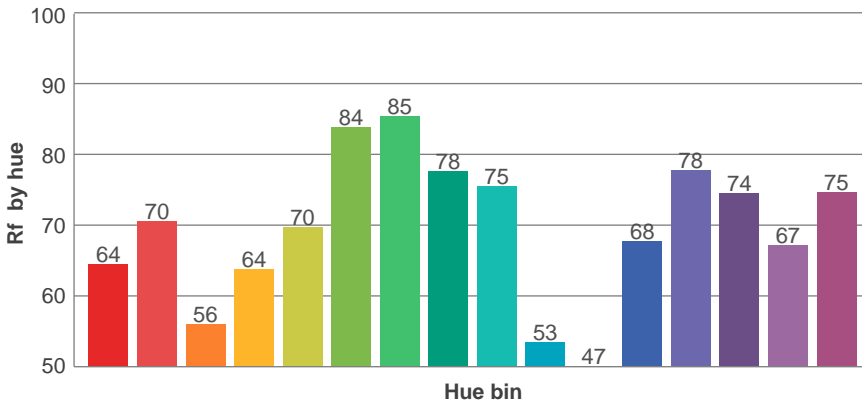
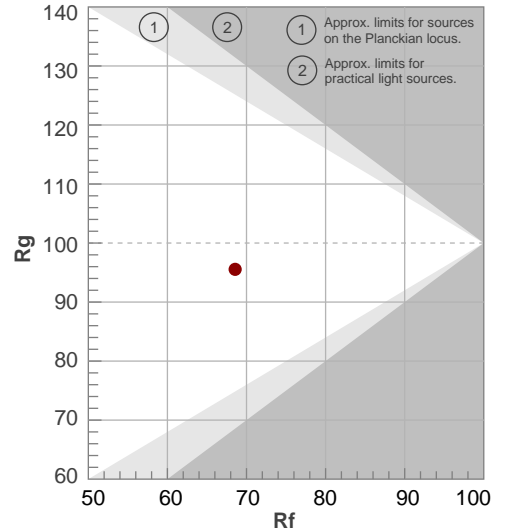


TM30 Report

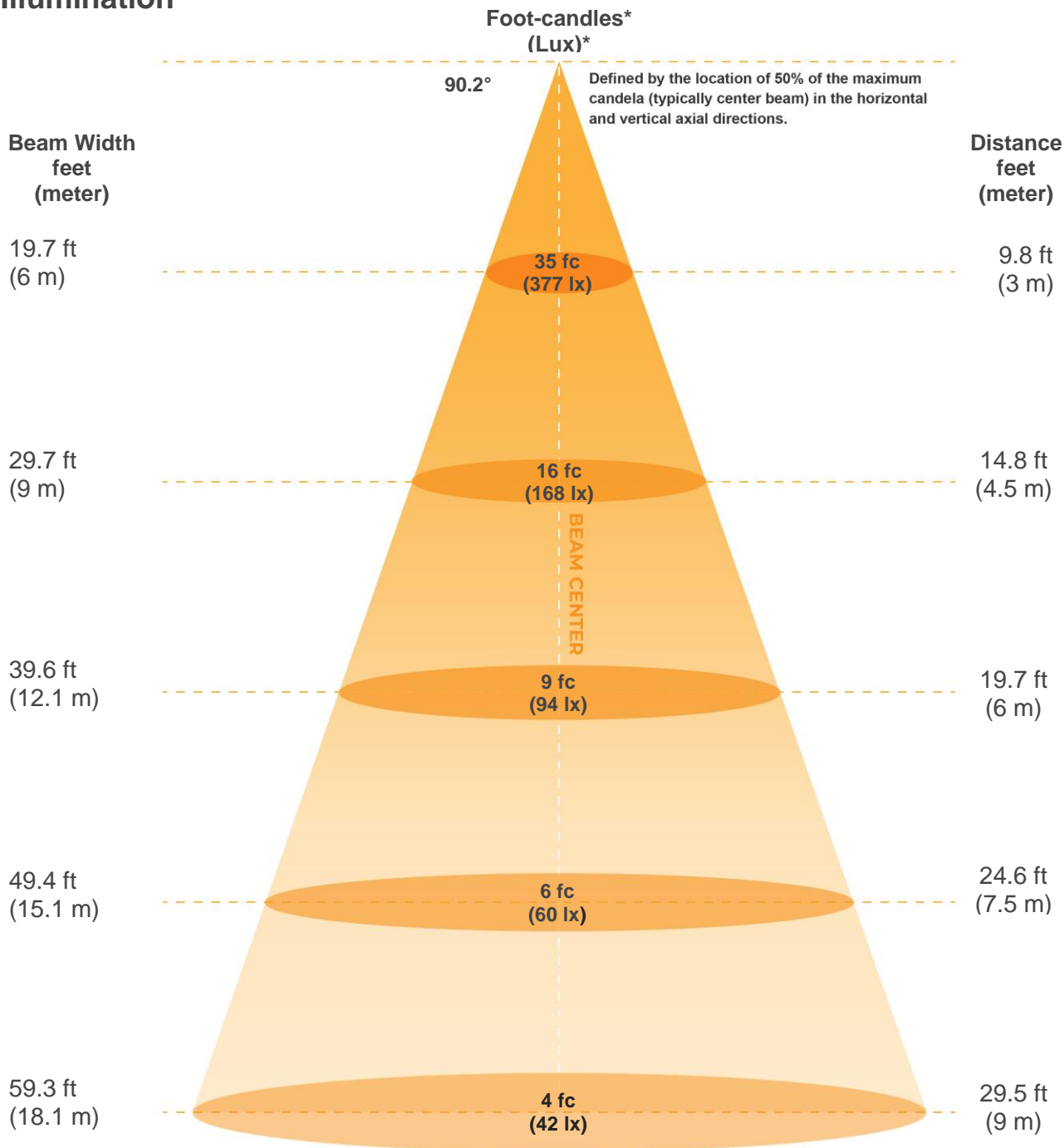
Rf 68.6
Fidelity index Rf

Rg 95.5
Gammut index Rg

Hue Bin	R _f	Graphic shifts (%)	
		Chroma	Hue
1	64	-17%	-3%
2	70	-13%	10%
3	56	-6%	22%
4	64	4%	20%
5	70	11%	13%
6	84	10%	0%
7	85	0%	-8%
8	78	-10%	-6%
9	75	-18%	7%
10	53	-13%	22%
11	47	-3%	29%
12	68	6%	19%
13	78	15%	6%
14	74	11%	-5%
15	67	9%	-24%
16	75	-5%	-13%



Illumination



Beam intensities from 1-20m

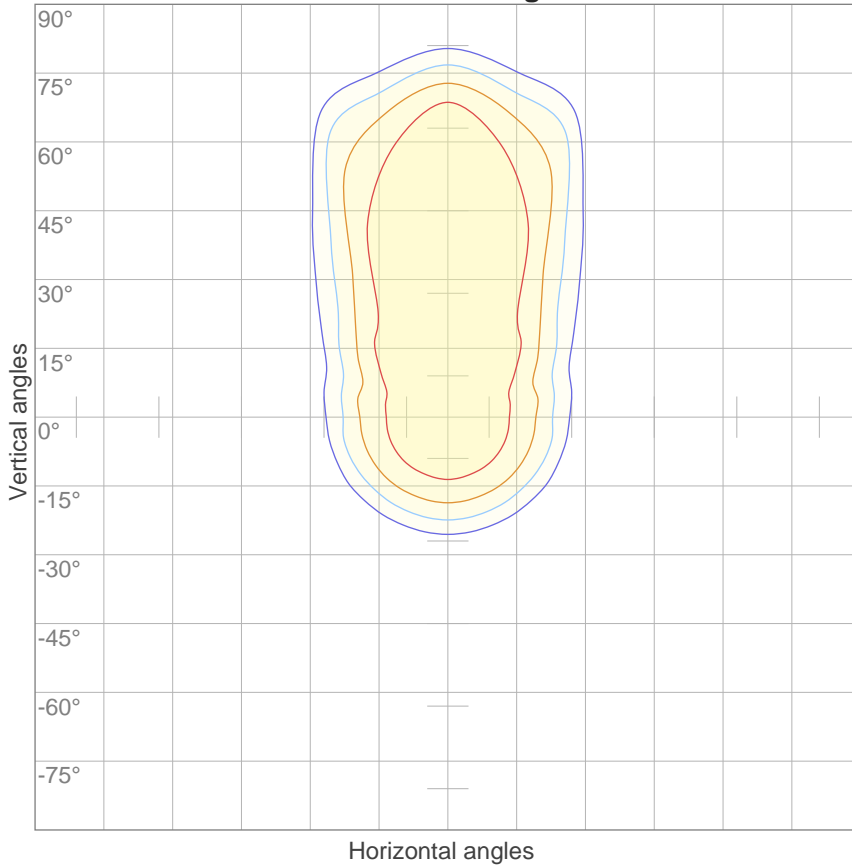
1m	2m	3m	4m	5m	6m	7m	8m	9m	10m	11m	12m	13m	14m	15m	16m	17m	18m	19m	20m
3.3ft	6.6ft	9.8ft	13.1ft	16.4ft	19.7ft	23ft	26.2ft	29.5ft	32.8ft	36.1ft	39.4ft	42.7ft	45.9ft	49.2ft	52.5ft	55.8ft	59.1ft	62.3ft	65.6ft
3397lx	849lx	377lx	212lx	136lx	94lx	69lx	53lx	42lx	34lx	28lx	24lx	20lx	17lx	15lx	13lx	12lx	10lx	9lx	8lx
315.6fc	78.9fcd	35.1fcd	19.7fcd	12.6fcd	8.8fcd	6.4fcd	4.9fcd	3.9fcd	3.2fcd	2.6fcd	2.2fcd	1.9fcd	1.6fcd	1.4fcd	1.2fcd	1.1fcd	1fcd	0.9fcd	0.8fcd

Beam angle 50%	Field angle 10%	Cutoff angle 2,5%	Intensity ratio in 120° cone	Intensity ratio in 90° cone
90.2°	135.3°	159°	70.8%	53.6%



ISO Diagrams

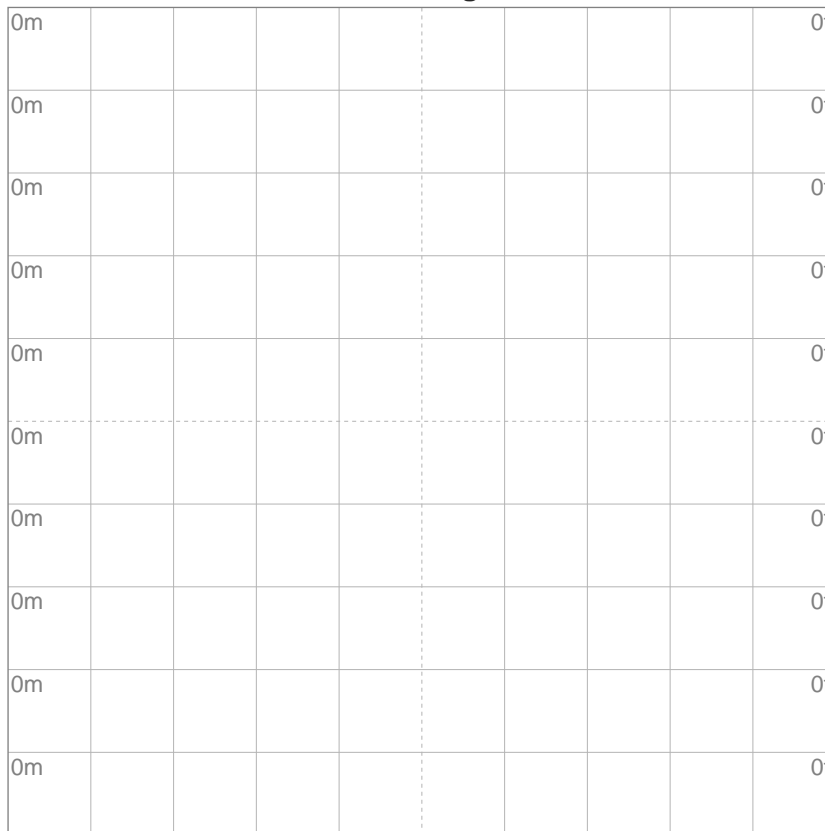
ISO candela diagram



10%	340 cd
20%	679 cd
30%	1019 cd
40%	1359 cd
50%	1698 cd
60%	2038 cd
70%	2378 cd
80%	2717 cd
90%	3057 cd

Conditions:
 Number of c-planes: 16
 Candela at center: 3397 cd

ISO lux diagram



3%	1.02 lx
5%	1.70 lx
10%	3.40 lx
30%	10.2 lx
50%	17.0 lx

Conditions:
 Number of c-planes: 16
 Lux at center: 34.0 lx

Lux distribution on a surface when lamp is mounted at 10 meters from the surface.

Mounting height: 10 meters (33 feet)



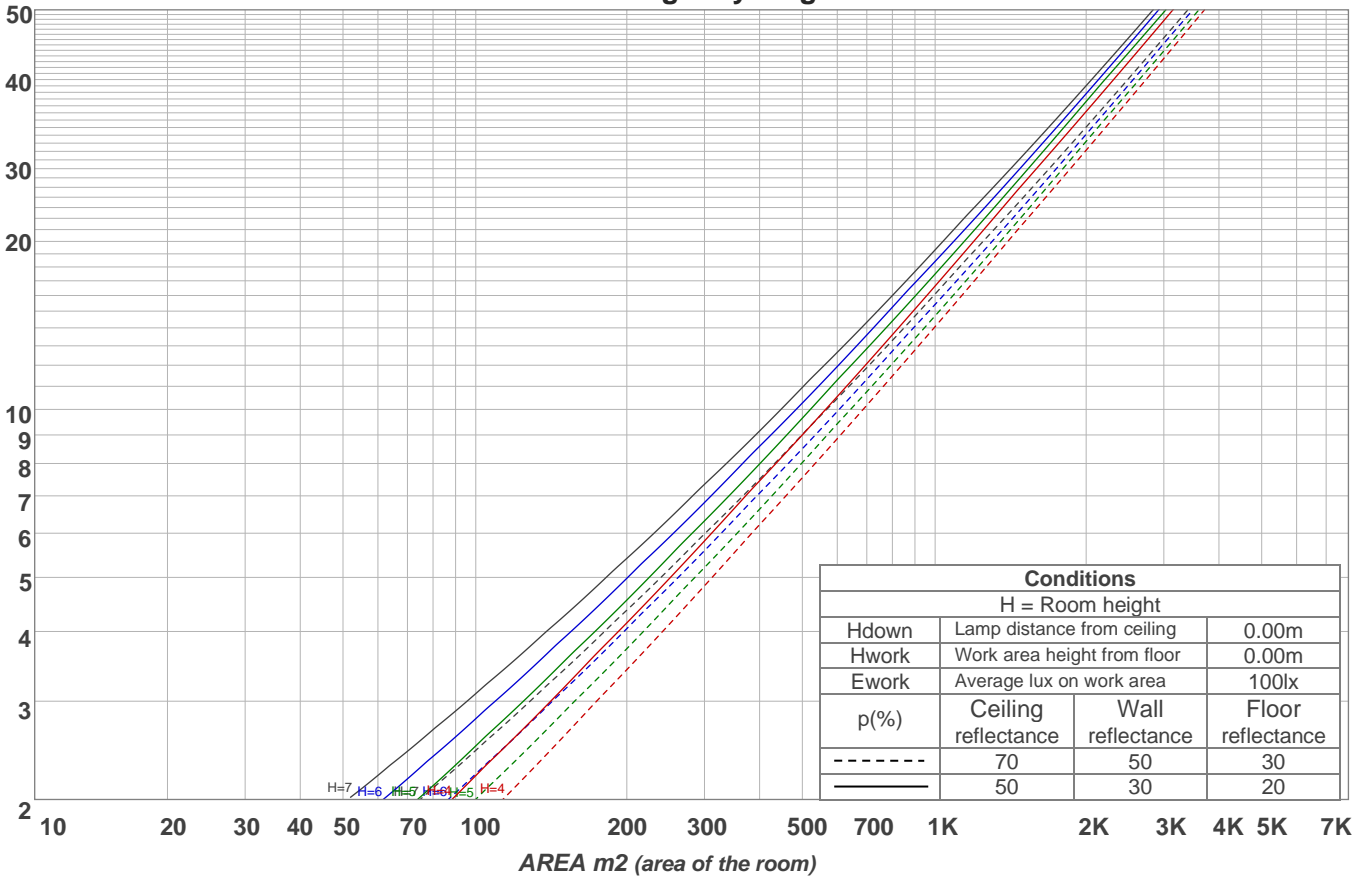
Light Planning

Coefficients of Utilization

Ceiling reflectance	80				70				50			30			10			0	
Wall reflectance	70	50	30	10	70	50	30	10	50	30	10	50	30	10	50	30	10	0	
Floor reflectance	20	20	20	20	20	20	20	20	20	20	20	20	20	20	20	20	20	20	0
RCR	(RCR: Room Cavity Ratio)																		
	Room Values are expressed as percentage of Lumens delivered to the task surface																		
0	118	118	118	118	114	114	114	114	108	108	108	102	102	102	97	97	97	94	
1	106	101	96	92	103	98	94	90	93	89	86	88	85	82	83	81	79	76	
2	97	88	81	75	93	86	79	74	81	76	71	77	72	68	73	69	66	64	
3	88	78	70	63	85	76	68	62	72	66	60	68	63	58	65	61	57	54	
4	81	70	61	54	79	68	60	53	65	58	52	62	56	51	59	54	50	47	
5	75	63	54	47	73	61	53	47	58	51	46	56	50	45	54	48	44	42	
6	70	57	48	42	68	56	47	41	53	46	41	51	45	40	49	43	39	37	
7	65	52	43	37	63	51	43	37	49	42	37	47	41	36	45	40	35	33	
8	61	48	40	34	59	47	39	34	45	38	33	43	37	33	42	36	32	30	
9	57	44	36	31	55	43	36	31	42	35	30	40	34	30	39	33	29	27	
10	54	41	33	28	52	40	33	28	39	32	28	38	32	27	36	31	27	25	

LAMPS (number of lamps)

Luminaire budgetary diagram



Zonal Lumen Summary

0°-10°	10°-20°	20°-30°	30°-40°	40°-50°	50°-60°	60°-70°	70°-80°	80°-90°
320 lm	892 lm	1225 lm	1256 lm	1119 lm	841 lm	744 lm	657 lm	483 lm
90°-100°	100°-110°	110°-120°	120°-130°	130°-140°	140°-150°	150°-160°	160°-170°	170°-180°
269 lm	119 lm	29.5 lm	12.8 lm	7.91 lm	5.67 lm	4.41 lm	2.83 lm	0.980 lm

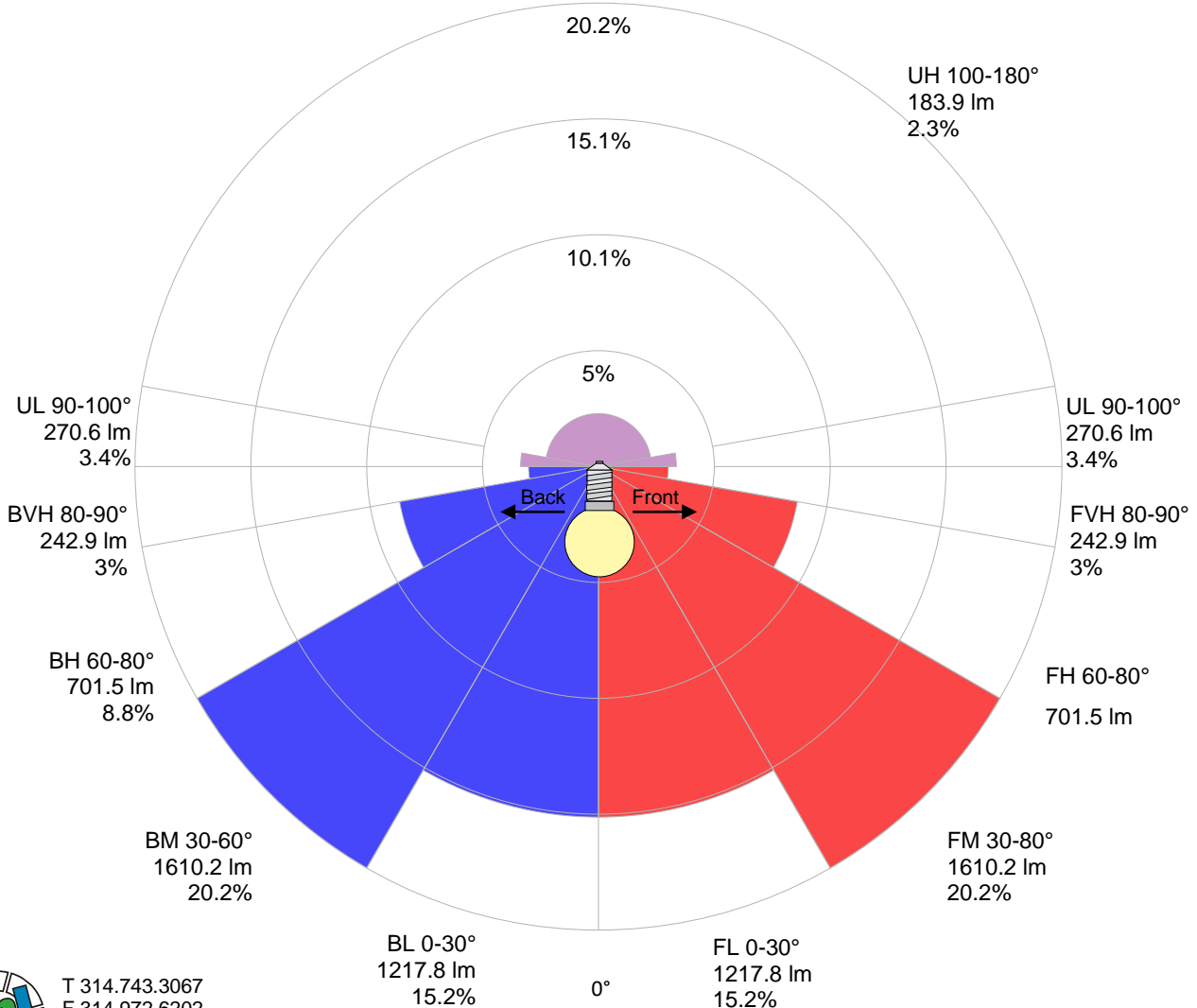


Road Report

LCS table

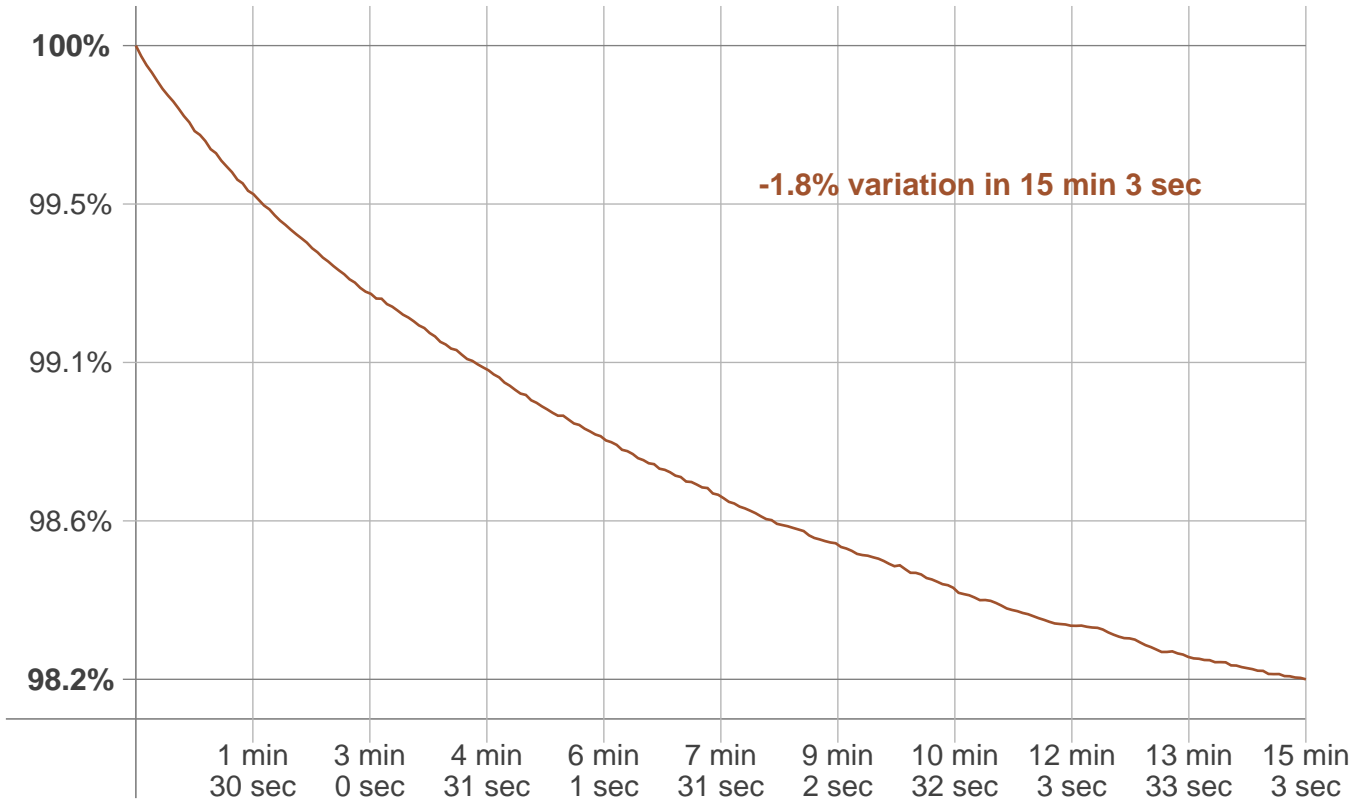
BUG rating:	B3 U3 G3	
Forward light	Lumens	Lumens %
Low(0-30):	1217.8	15.2%
Medium(30-60):	1610.2	20.2%
High(60-80):	701.5	8.8%
Very high(80-90):	242.9	3%
Back light		
Low(0-30):	1217.8	15.2%
Medium(30-60):	1610.2	20.2%
High(60-80):	701.5	8.8%
Very high(80-90):	242.9	3%
Uplight		
Low(90-100):	270.6	3.4%
High(100-180):	183.9	2.3%

LCS graph



Stabilization

Warmup curve



Warmup result

Warmup time:	15 min 3 sec
Warmup variation	-1.8%

Warmup conditions

Stable period:	15 min
Stable change max:	2.0%
Minimum time:	15 min

Color temperature change

CCT start	CCT change	CCT end
5452 K	+23 K	5475 K

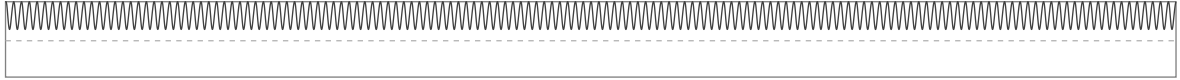
Output change

Output start	Output change	Output end
8133 lm	-143 lm	7989 lm

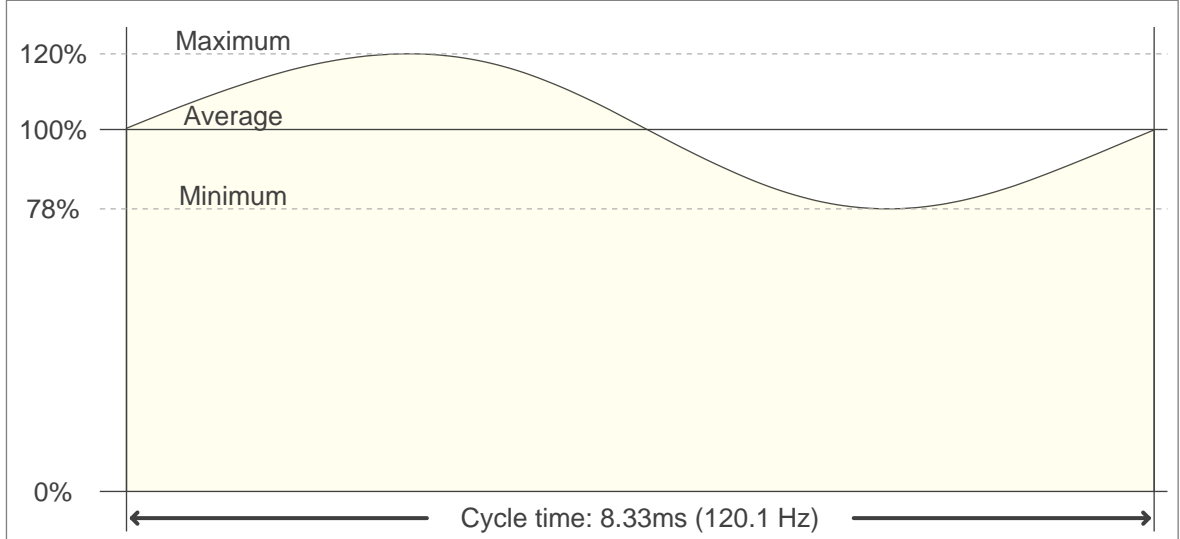


Flicker

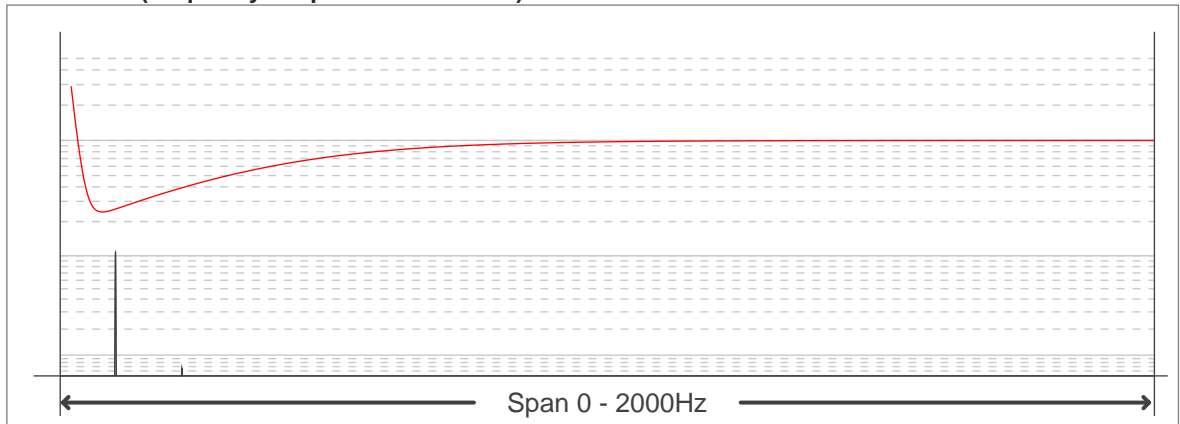
Flicker curve (complete sampled flicker signal)



Flicker frame (frame of one flicker period)



Flicker FFT (frequency scope of flicker curve)



Flicker results:

Flicker frequency:	120.12 Hz
Flicker index:	0.07
Flicker percentage:	21.6 %
SVM: (Visual flicker)	0.77

Flicker conditions:

Sample rate:	40000 samples/second
---------------------	-----------------------------

