

Output: 20396 lm

Peak: 7050 cd

Power: 143 W

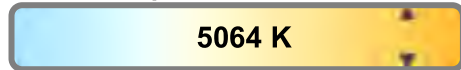
Light efficiency:



Light quality:



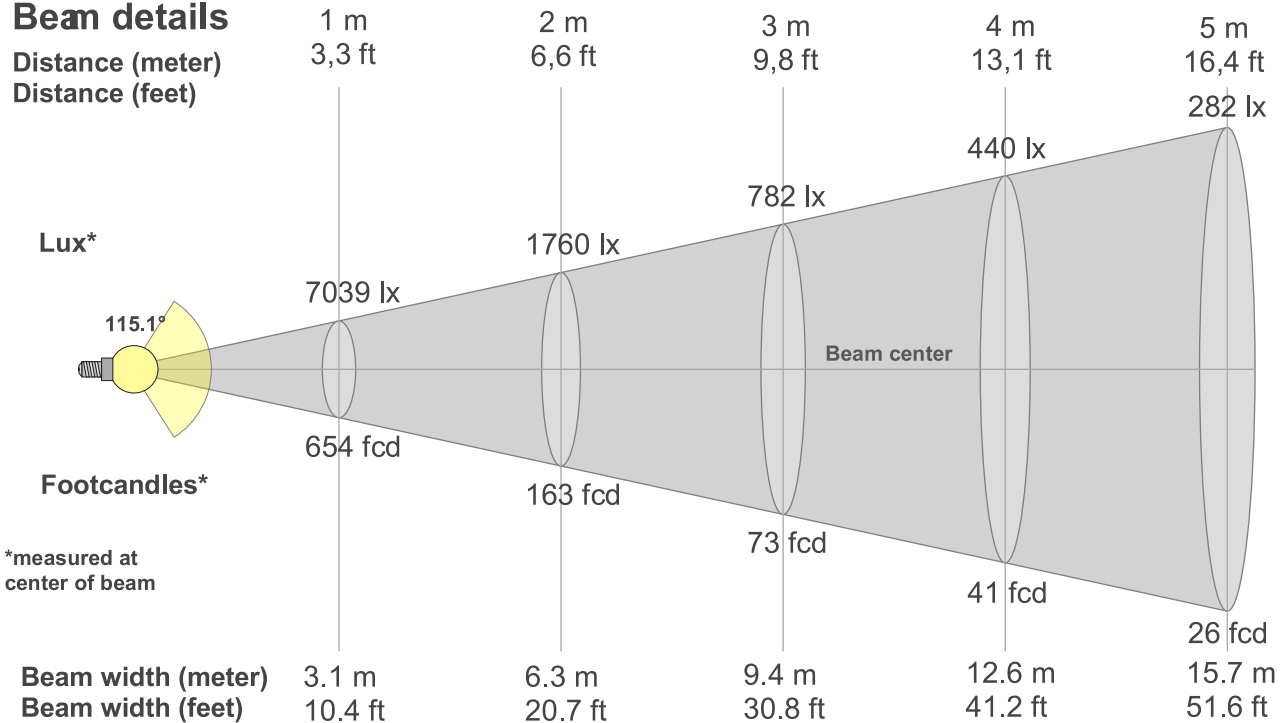
Color temperature:



Beam angle **115.1°**

Beam details

Distance (meter)
Distance (feet)

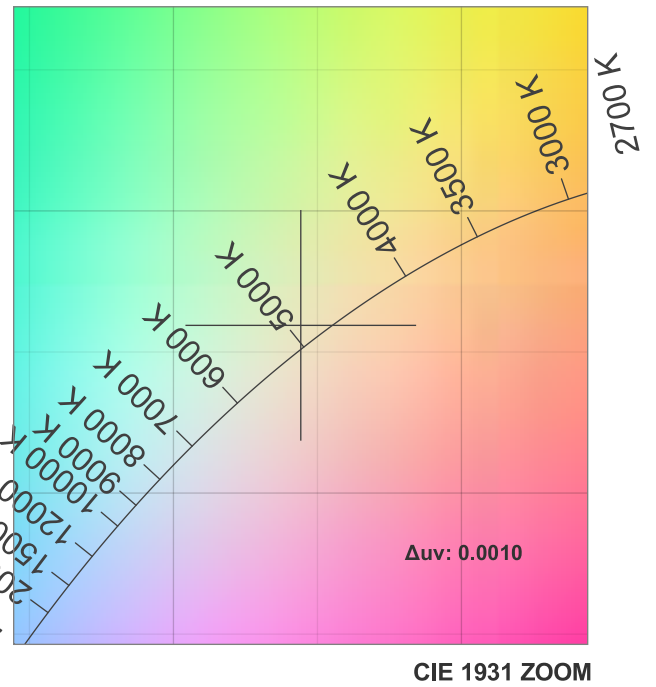
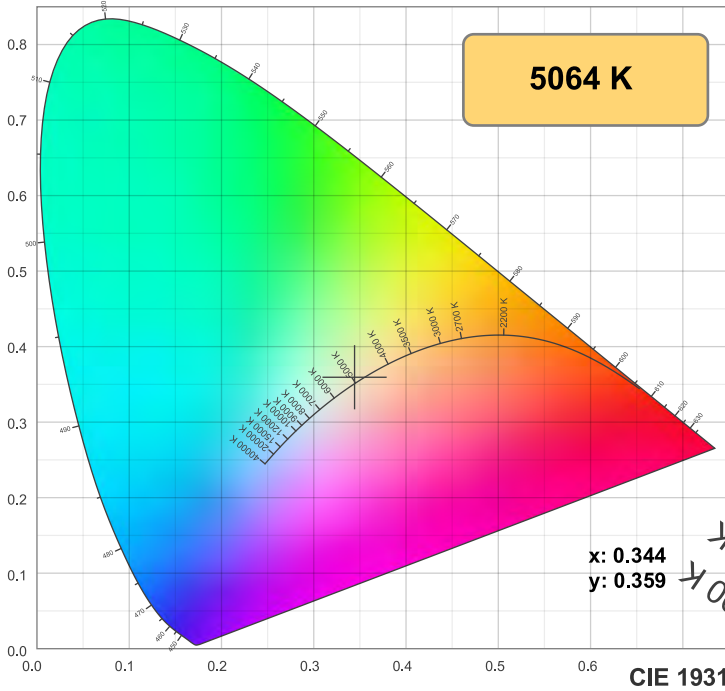


*measured at center of beam

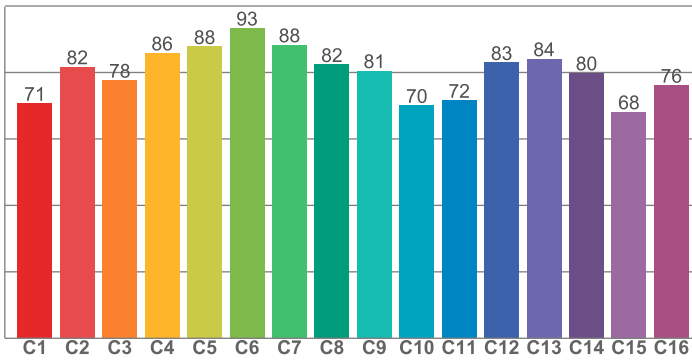
Beam angle 50%	Field angle 10%	Cutoff angle 2,5%	Intensity ratio in 120° cone	Intensity ratio in 90° cone
115.1°	153.7°	165.4°	81.9%	55.3%



Color details



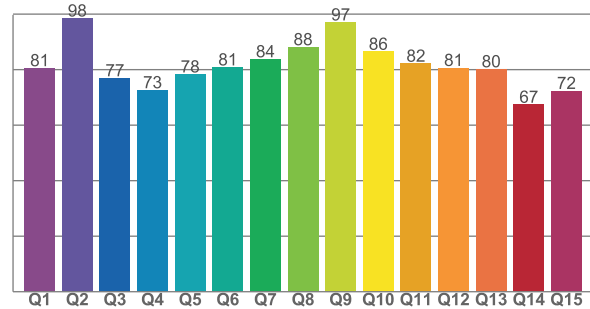
TM30: 80.5



TM30 C values, 16 binned values out of total of 99 C values

C1	C2	C3	C4	C5	C6	C7	C8	C9	C10	C11	C12	C13	C14	C15	C16
70.7	81.7	77.7	85.9	87.8	93.4	88.3	82.4	80.5	70.1	71.6	83.0	84.1	79.9	68.2	76.1

CQS: 80.0



CQS Q values

Q1	Q2	Q3	Q4	Q5	Q6	Q7	Q8	Q9	Q10	Q11	Q12	Q13	Q14	Q15
80.6	98.5	76.9	72.6	78.3	80.8	83.8	88.1	97.0	86.5	82.2	80.6	80.2	67.4	72.4

Color parameters

Color temperature	Color rendering index	Color fidelity	Color gamut	Color quality scale	Color coordinate cie 1931	Color coordinate cie 1931	Color coordinate	Color coordinate	Color deviation from black body
CCT	CRI	TM30 Rf	TM30 Rg	CQS	x	y	u	v	Δuv
5064 K	81.7	80.5	93.0	80.0	0.344	0.359	0.208	0.326	0.0010



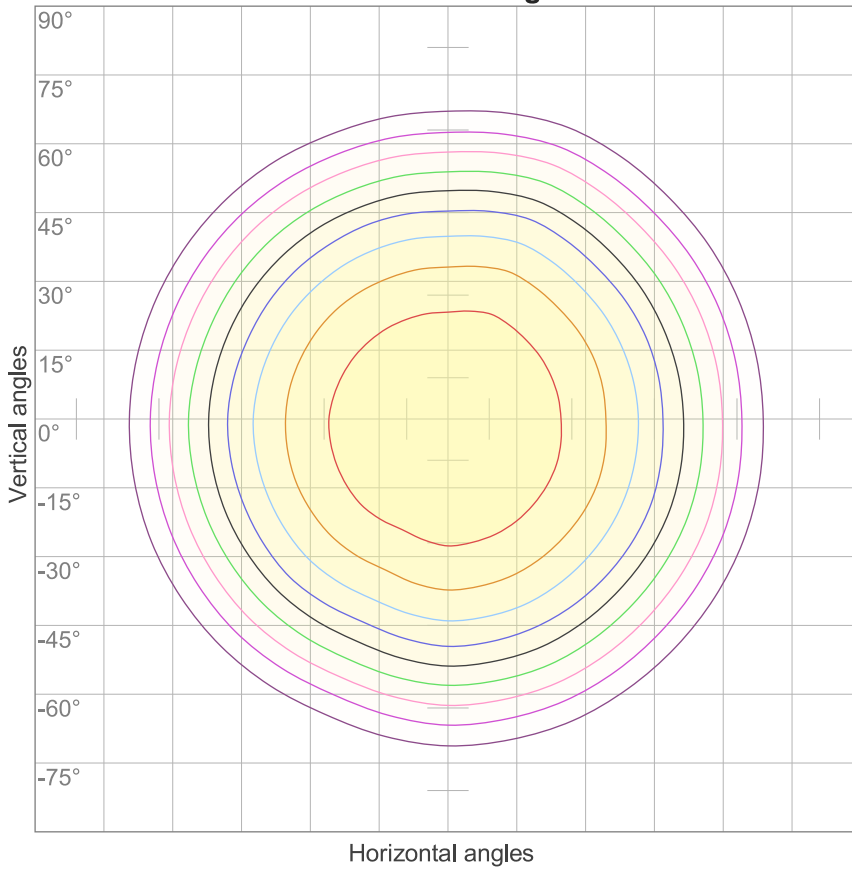
T 314.743.3067

F 314.972.6202

email: commercial-sales@superbrightleds.com

www.superbrightleds.com/

ISO Diagrams ISO candela diagram



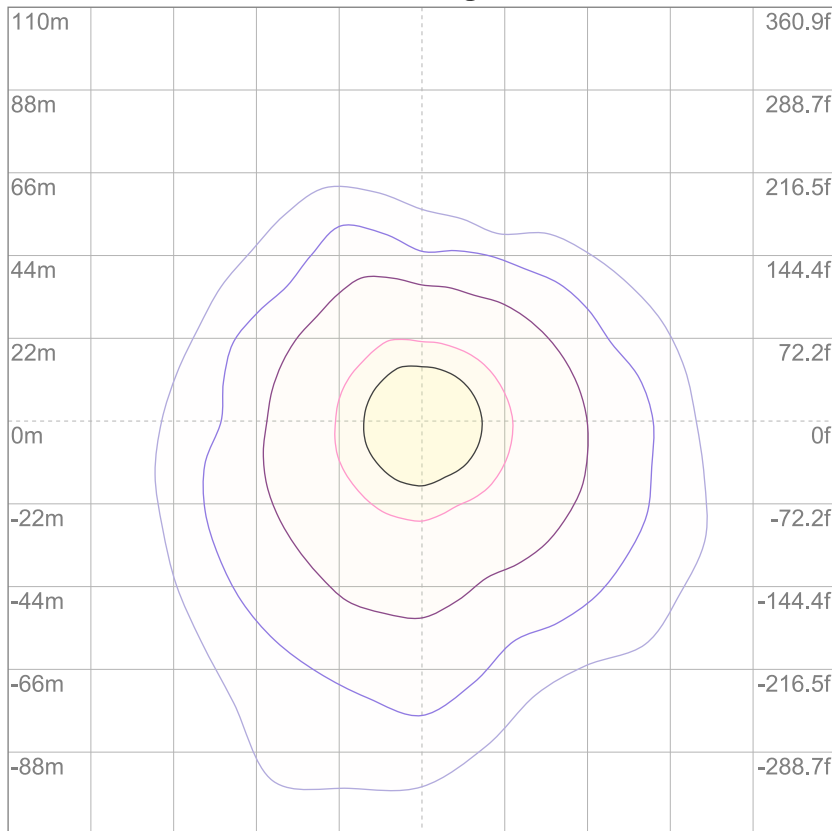
10%	704 cd
20%	1408 cd
30%	2112 cd
40%	2816 cd
50%	3519 cd
60%	4223 cd
70%	4927 cd
80%	5631 cd
90%	6335 cd

Conditions:

Number of c-planes: 16

Candela at center: 7039 cd

ISO lux diagram



3%	2.11 lx
5%	3.52 lx
10%	7.04 lx
30%	21.1 lx
50%	35.2 lx

Conditions:

Number of c-planes: 16

Lux at center: 70.4 lx

Lux distribution on a surface when lamp is mounted at 10 meters from the surface.

Mounting height: 10 meters (33 feet)



T 314.743.3067

F 314.972.6202

email: commercial-sales@superbrightleds.com

www.superbrightleds.com/