

DATA SHEET

REGULOR LED extrusion – article number B468+43

Product characteristics

The extrusion made from high quality, double-anodized aluminum, designed for flexible or rigid LED strips that are 8 - 10mm wide. One of the accessories offered for the extrusion are covers that shade and protect LEDs inside the profile. There are few types of covers: cover K (frosted or transparent), HS (frosted or transparent) or clear focusing cover- S. Covers are made of polycarbonate, and additionally, HS covers are certified for excellent resistance to all weather conditions or UV radiation as well as are flame retardant. The characteristic of the Regulor extrusion is an aluminum insert. The insert permits to adjust angles of diode's lighting. We can receive suitable angles of lighting by using focusing cover "S" and putting insert into the extrusion in the proper notch. If these two conditions are fulfilled it is possible to get the following angles of light: 10 degree (without insert) and 30°, 60°, 90° (depends from the insert position). Standard polypropylene end caps and mounting brackets (made of steel, zinc or chrome finish) are used for the extrusion as supplementary accessories. End caps protect the extrusion from dust and other undesirable elements, which can make LED strips dirty and consequently deteriorate lighting parameters. The extrusion can be mounted to surfaces with the use of double sided adhesive tape or mounting brackets. The mounting bracket guarantees easy and secure mounting of the extrusion to a desired surface. It can also work as connector between two extrusions.

Integrated, straight line of light can be achieved by assembling: the extrusion, frosted HS cover and densely spaced LEDs. LED fixture can also be assembled to be waterproof and has its ingress protection rating (the protection against the ingress of solids, dust and water) equal IP 67.

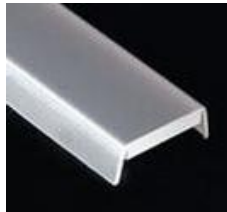
Applications

The extrusion with LED light source is mostly used as interior lighting, especially to light cabinets, stairs, glass-cases, or as a decoration light for a niche in drywall ceilings. IP 67 version can also be used as an outdoor lighting for elevations or architectural elements of gardens.

Products related to the Extrusion



cover type K
frosted (1547)
transparent (1548)



cover type HS
frosted (1369)
transparent (1370)



cover type S
(00220)



end cap
without hole (00310)
with hole (00313)

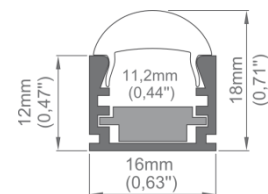


mounting bracket
zinc (1072)
chrome matt (1345)

Technical specification

| | |
|---------------------------|---|
| Ingress Protection Rating | IP 20 (standard), IP 67 (optional) |
| Available lengths | 1 m / 2 m (can be cut to any size) |
| Material | body – aluminum, cover – polycarbonate (PC), end cap – polypropylene (PP), mounting bracket – steel |

Product are RoHS compliant.



KLUS