

Important: Read all instructions prior to installation. SAVE THESE INSTRUCTIONS.

XSCS-RW

LED Exit and Emergency Light

Included Parts

- 1 - fixture
- 1 - hardware kit
- 1 - side mount bracket

Specifications

XSCS-RW	
Total Power Consumption	4 W (in maintenance mode)
Operating Voltage Range	120/277 VAC
Operating Temperature	50°–104° F (10°–40° C)
IP Rating	damp or dry location
Fixture Weight	7.3 lb (3.3 kg)
Battery Type	Ni-Cd AA 3.6 V 600 mAh (x2)

Important Safeguards

Read and follow all safety instructions. When using electrical equipment, basic safety precautions should always be followed including the following:

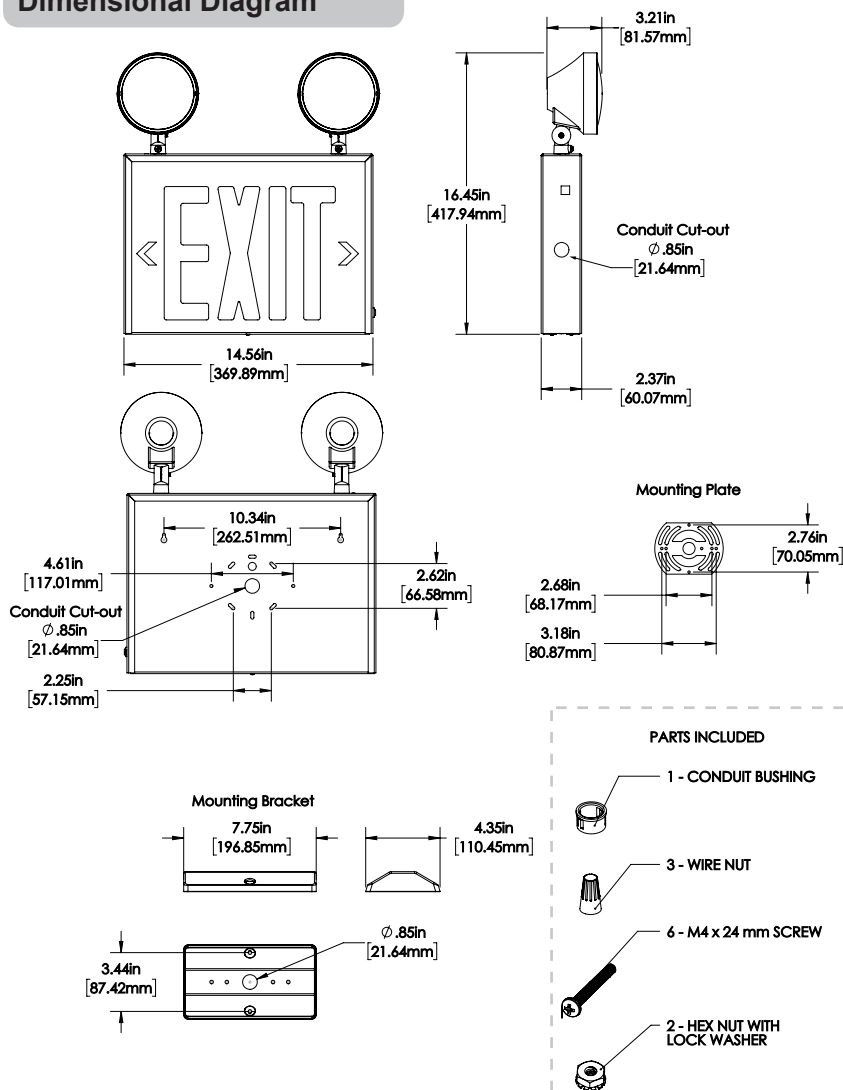
- This product should be installed and serviced by a certified electrician in accordance with applicable national, state, and local building and electrical codes.
- Light must be maintained, tested, and serviced in accordance with all applicable National Fire Protection Association (NFPA) and local codes.
- To reduce the risk of electric shock, ensure that the main power source and circuit breakers are switched off before performing any installation or wiring procedures.
- Ensure fixture is securely mounted and mount will support weight of the fixture. Failure to properly support fixture may result in damage or injury, for which the manufacturer does not assume responsibility.
- Equipment should be mounted in locations and at heights where it will not be subjected to tampering by unauthorized personnel.
- Indoor use only—do not use outdoors.
- Do not mount near gas or electric heaters or any other radiant heat sources.
- Use caution when handling or servicing the battery pack.
- For conduit wiring installation, use flexible conduit only
- The use of accessory equipment not recommended by the manufacturer may cause an unsafe condition.
- Do not use this equipment for anything other than its intended use.

Testing

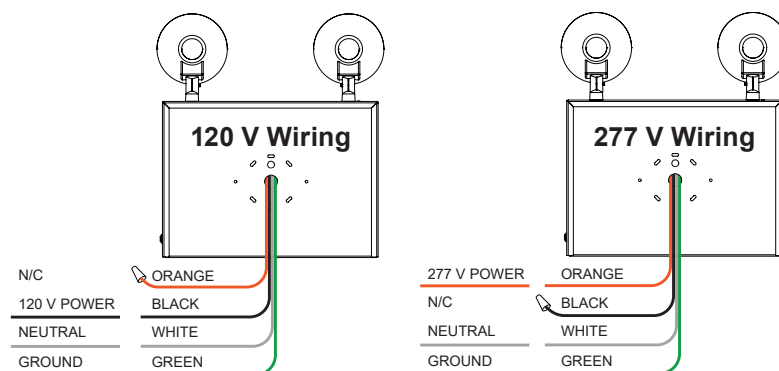
Manual Test button can be held to illuminate lights for manual testing purposes.

¹Limited 2-year warranty on battery.

Dimensional Diagram



Wiring Diagram



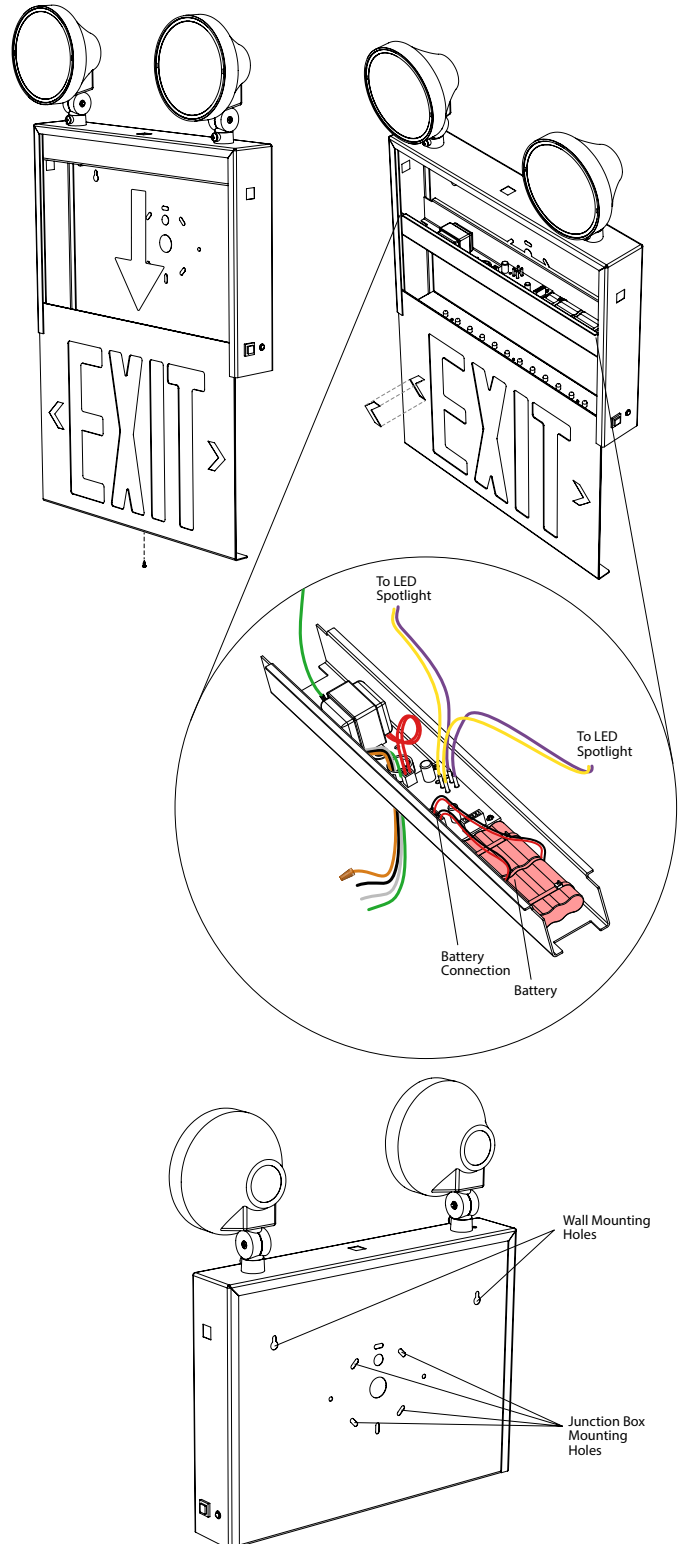
Important: Read all instructions prior to installation. SAVE THESE INSTRUCTIONS.

LED Exit and Emergency Light

Installation Instructions

Wall Installation (rear)

1. Remove screw at bottom of case holding front cover in place.
2. Remove appropriate knockouts for wiring and mounting from rear and/or side panel.
3. Using an appropriate strain relief (not included) or conduit, run wiring through rear or side panel. Connect wiring and cap unused wire. (refer to wiring diagram)
Note: Orange and black wires should never be connected at the same time.
4. Securely mount fixture to wall/junction box.
5. Slide internal component tray down and connect batteries.
6. Slide tray back up until it is locked in place. Remove arrow knockouts from front cover as needed, then slide front cover into place and reinstall capture screw.
7. Apply power and allow battery pack to charge for at least 24 hours before initial test.
8. After 24-hour period, press test button to make certain emergency lights are functioning as intended and are aimed correctly.



¹Limited 2-year warranty on battery.



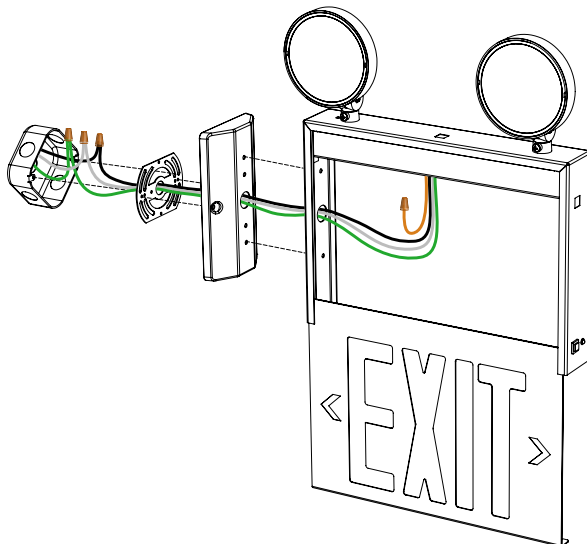
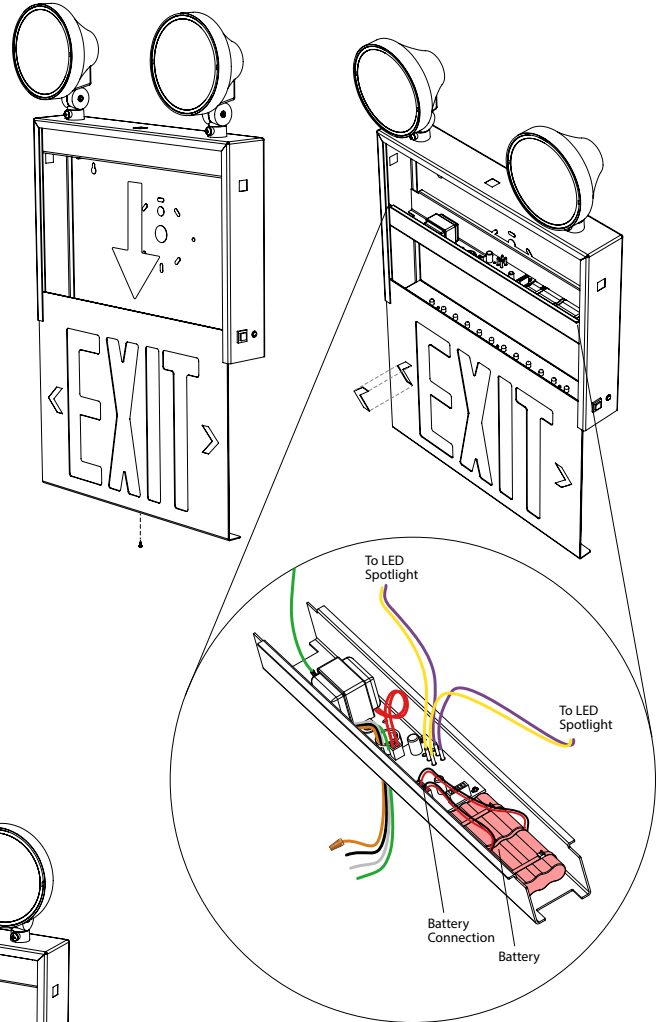
Important: Read all instructions prior to installation. SAVE THESE INSTRUCTIONS.

LED Exit and Emergency Light

Installation Instructions

Wall Installation (side)

1. Remove screw at bottom of case holding front cover in place. Note: For two-sided viewing, the blank rear cover can be removed using the same process and replaced later with additional included "exit" panel.
2. Remove appropriate knockouts for wiring and mounting from side panel.
3. Attach mounting plate to junction box, then attach mounting bracket to mounting plate.
4. Using an appropriate strain relief (not included) run wiring through side panel. Connect wiring and cap unused wire. (refer to wiring diagram) Note: Orange and black wires should never be connected at the same time.
5. Securely mount fixture to mounting bracket.
6. Slide internal component tray down and connect batteries.
7. Slide tray back up until it is locked in place. Remove arrow knockouts from cover(s) as needed, then slide cover(s) into place and reinstall capture screw(s).
8. Apply power and allow battery pack to charge for at least 24 hours before initial test.
9. After 24-hour period, press test button to make certain emergency lights are functioning as intended and are aimed correctly.



¹Limited 2-year warranty on battery.

