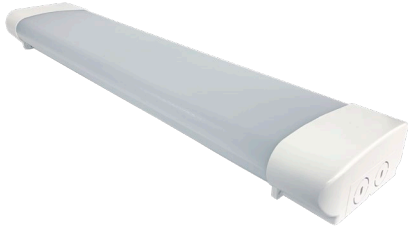


Important: Read all instructions prior to installation.

LED Wraparound Light



WRP-xK20F2

Safety and Notes

- Product should be installed and serviced in accordance with applicable national, state, and local building and electrical codes.
- To reduce the risk of electric shock, ensure that the main power source and circuit breakers are switched off before performing any installation or wiring procedures.
- Avoid looking directly into lamp when illuminated.
- Ensure all mounts are securely attached and will support the weight of the fixture. Failure to properly support fixture may result in damage or injury, for which the manufacturer does not assume responsibility.

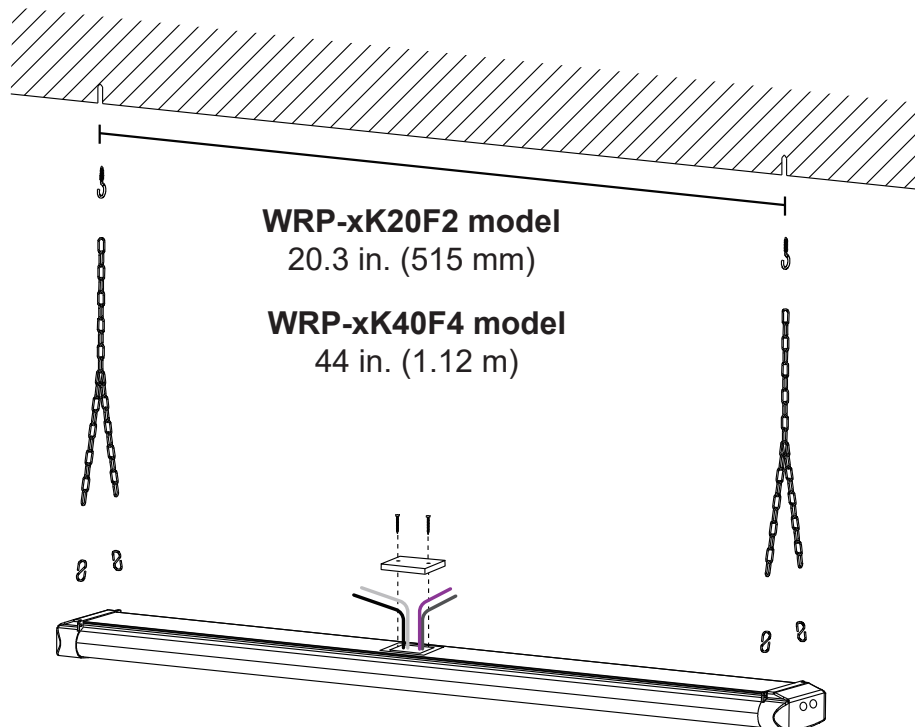
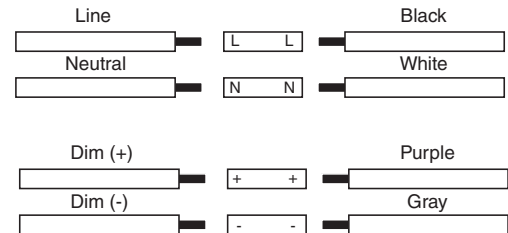
Specifications

Part Number	WRP-xK20F2	WRP-xK40F4
Operating Temperature	-40°–122° F (-40°–50° C)	
Environmental Rating	suitable for damp locations	
Dimming	0–10 V	
Weight	1.3 lb (0.6 kg)	2.1 lb (0.9 kg)

Check product label for specific electrical specifications related to installation.
Improper installation will void warranty.

Hanging Kit Installation

1. Measure hole distance according to diagram. Install two provided ceiling hooks.
2. With supply power off, connect wiring.
3. Insert “S” hooks into light.
4. Attach chain to “S” hooks and hang chain on ceiling hooks.

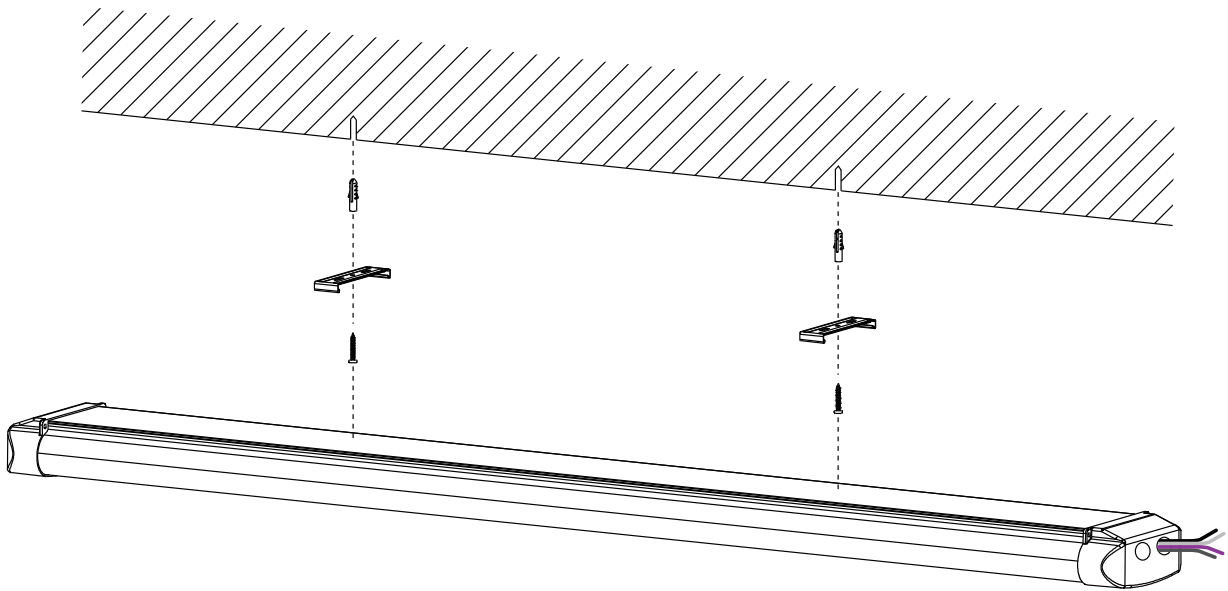


Important: Read all instructions prior to installation.

LED Wraparound Light

Surface Mount Installation

1. Mount brackets to surface.
Note: Brackets should be positioned approximately 6 in. from the edge of 24 in. lights and 12 in. from the edge of 48 in. lights.
2. With supply power off, connect wiring.
3. Mount light by pushing into brackets until locked in place.



Linking Fixtures

Lights can be connected end to end to allow multiple lights to operate off of one power source. Up to eight lights (WRP-xK20F2) or five lights (WRP-xK40F4) can be linked at one time.

