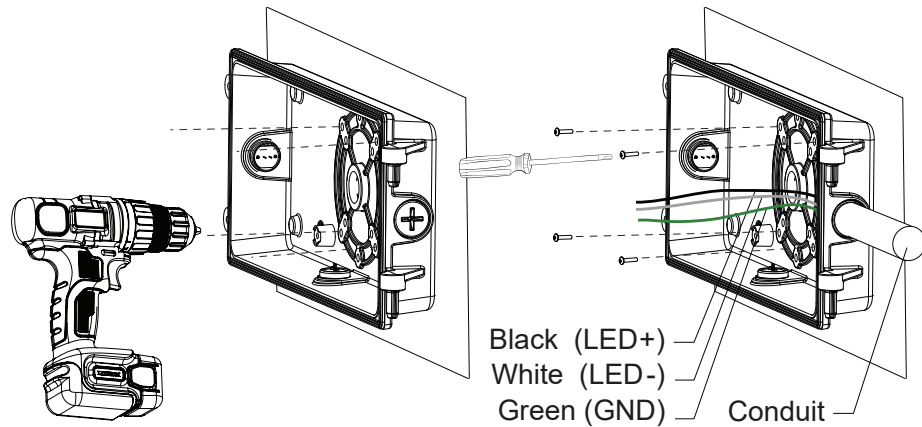


Important: Read all instructions prior to installation.

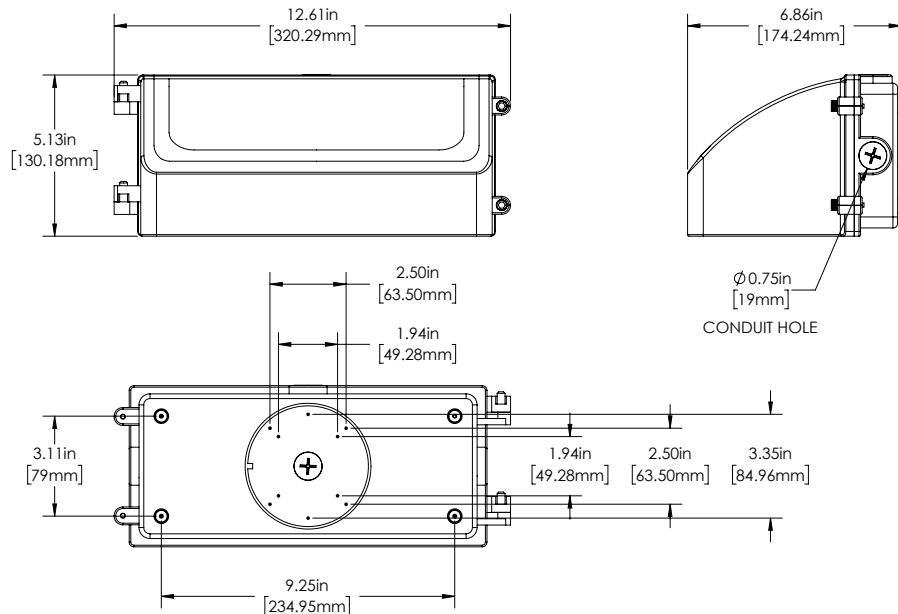
## Full-Cutoff LED Wall Pack

### Installation: Mounting to Wall/Conduit

WPFC2 Series



### Dimensional Drawings



## Full-Cutoff LED Wallpack

## User Manual

WPFC2 Series



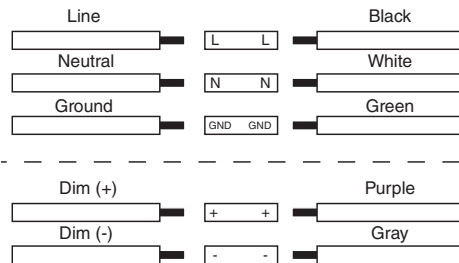
Important: Read all instructions prior to installation.

## Full-Cutoff LED Wall Pack

### Specifications

Model	WPFC2-xK40-H	WPFC2-xK60-H	WPFC2-xK80-H
Voltage	120-277 VAC		
Wattage	40 W	60 W	80 W
Current	0.33 A @120 VAC	0.5 A @120 VAC	0.67 A @120 VAC
Beam Angle	NEMA 5 x NEMA 6 (90°x100°)		
Operating Temperature	-4°-104° F (-20°-40° C)		
IP Rating	IP65		
Dimming	yes (1-10 V)		
Warranty	5 years		

### Wire Diagram

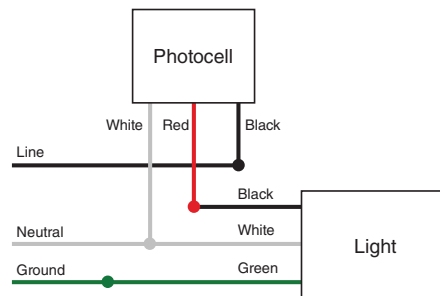


### Safety Notes

- Product should be installed and serviced by a certified electrician in accordance with applicable national, state, and local building and electrical codes.
- To reduce the risk of electric shock, ensure that the main power source and circuit breakers are switched off before performing any installation or wiring procedures.
- Avoid looking directly into lamp when illuminated.
- Ensure all mounts are securely attached and will support the weight of the fixture. Failure to properly support fixture may result in damage or injury, for which the manufacturer does not assume responsibility.

### Photocell Installation

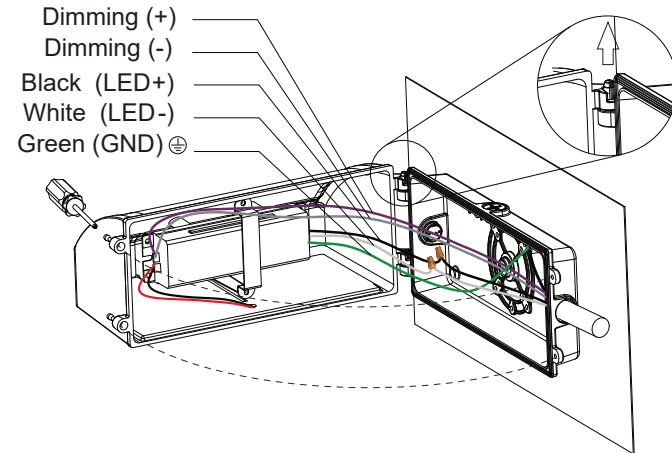
Photocell can be installed into any available conduit hole. Wire according to wiring diagram.



Important: Read all instructions prior to installation.

## Full-Cutoff LED Wall Pack

### Opening Fixture



### Installation: Mounting to J-box

