

Important: Read all instructions prior to installation.

Dimmable LED Under Cabinet Fixture

Parts Included

1 - LED Under Cabinet Fixture

Accessories

1 - 12" Interconnect Cable (UC-I30)

1 - 6' Power Cable (UC-P183)

Features

- Off / Dim / Bright Switch
- ELV Dimmer Compatability
- Linkable Design
- Six foot long Power Cable
- Twelve inch long Interconnect Cable
- Vertical or Horizontal Mounting Ability options
- White Finish
- Dual Row LEDs

Specifications

Operating Voltage	120 VAC
Beam Angle	100°
Operating Temperature	-13~104°F (-25~40°C)
LED Lifetime	30,000 Hours
LED Color	Warm White
Dimensions (L,W,H)	16.8" x 2.3" x 1" (425.5mm x 58.4mm x 25.4mm)
Weight	9.8 oz (278g)

Installation

CAUTION: Remove power prior to servicing any part of this system. Maximum continuous run of lights in series is 10 lights.

Mounting (Horizontal Mounting Slots):

1. Remove plastic covers on the fixture with small flat blade screwdriver.
2. Hold fixture in desired mounting position and mark screw location.
3. Pre-drill 3/32" diameter holes as necessary.
4. Insert the screws through the slots and secure the fixture to the surface.
5. Replace the plastic covers to hide the screws.
6. Attach interconnects between linked lights.
7. Attach power cord and plug into wall socket.

Mounting (Vertical Mounting Slots):

1. Determine desired mounting location. Mark screw locations.
2. Pre-drill 3/32" diameter holes at marked locations and attach mounting screws (included) to surface. Be sure to leave 1/16" space between surface and screw head.
3. Place fixture so screw heads align with large end of mounting slots and secure by sliding fixture so the screw heads are captured in the narrow end of slots.
4. Attach interconnects between linked lights.
5. Attach power cord and plug into wall socket.

Mounting Installation Diagrams

FIGURE 4. VERTICAL INSTALLATION

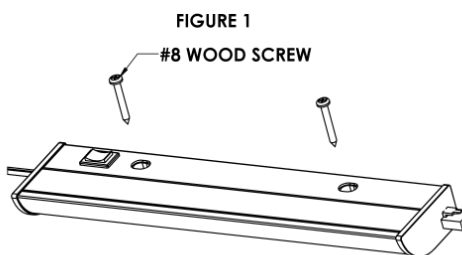
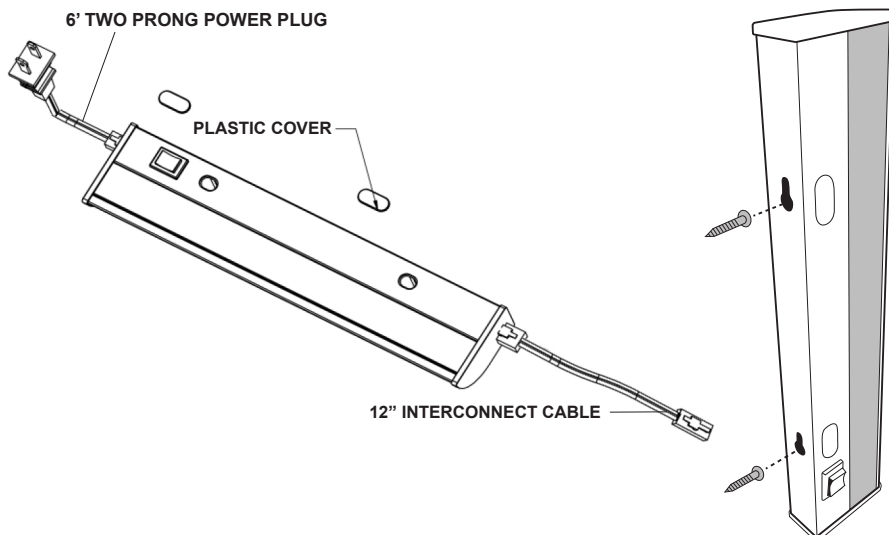
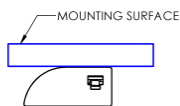


FIGURE 3. HORIZONTAL INSTALLATION



Important: Read all instructions prior to installation.

Dimmable LED Under Cabinet Fixture

Light Connections

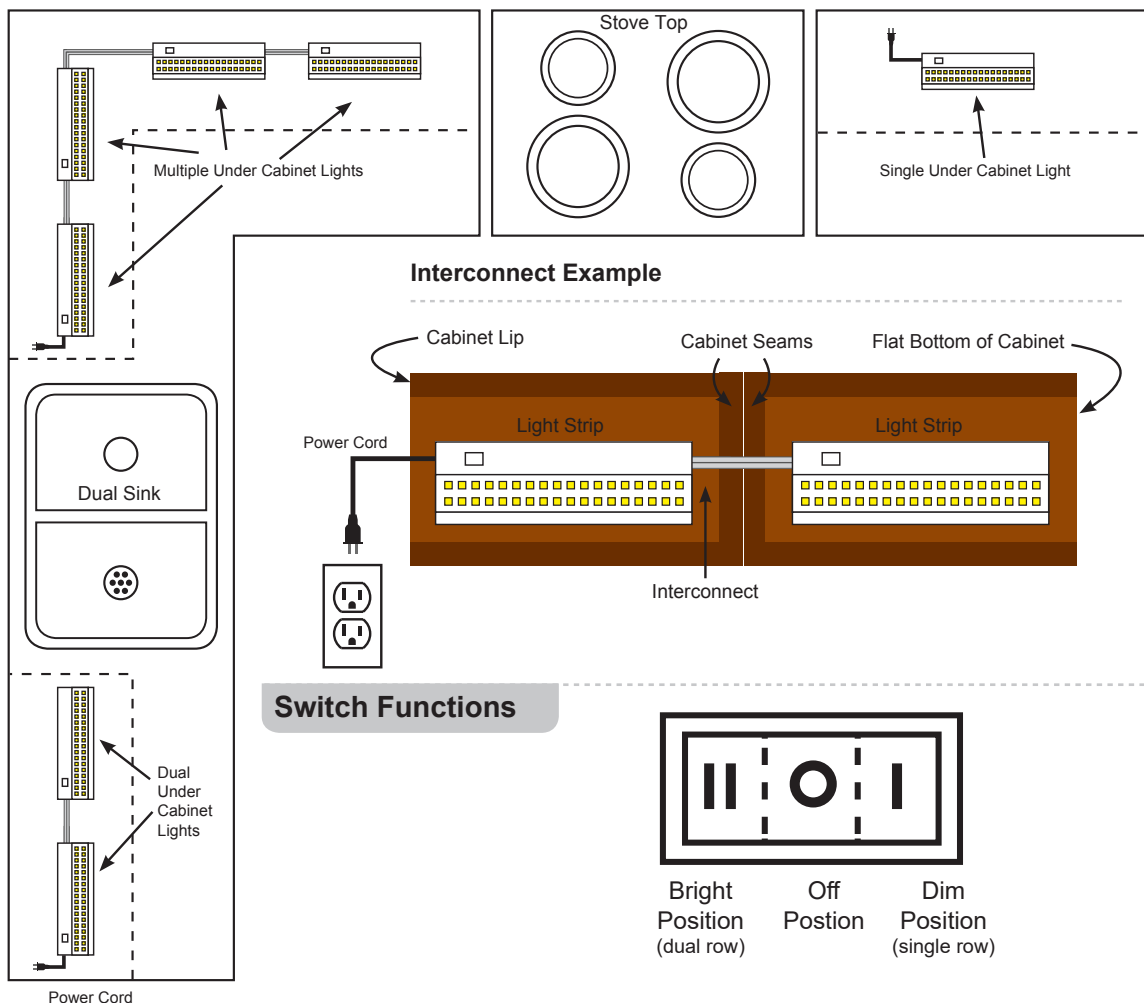


Push connector tab to release



Caution: Turn off all power before proceeding.
Use screwdriver to release inner tab inside of LED light.

General Diagram



Switch Functions

