

Important: Read all instructions prior to installation.

LED Tailgate Light Bar

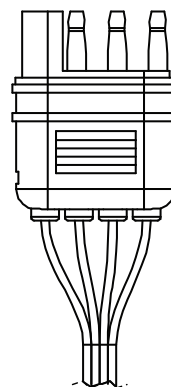
Safety and Notes

- To reduce risk of electric shock, ensure that battery is disconnected before performing any installation procedures.
- Avoid looking directly into lamp when illuminated.
- Modifications to the light or improper installation—not consistent with guidelines of this document—will void warranty.
- Newer models (such as 2015+ Ford F-150s, 2017+ Ford Super Duty trucks, and 2019+ GM trucks) will require a PWM adapter (not included) or direct wiring to tailgate harness to function properly.

Installation Instructions

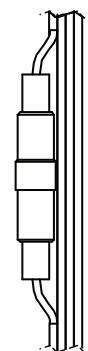
1. Measure the lip under your vehicle tailgate to ensure there is enough clearance to mount light bar.
2. Clean mounting surface with $\geq 90\%$ isopropyl alcohol prior to installation (not included).
3. Apply 3M Adhesion Promoter (not included, 06396 at superbrightleds.com) to surface.
4. Mark area with a non-permanent media to create alignment marks.
5. Remove adhesive backing film and attach light bar to surface.
6. Run power wire with flat 4-pin connector behind your bumper and connect to vehicles flat 4-pin connection. Secure any slack in the wire so it does not hang below bumper.
7. Locate power wire for reverse lights on vehicle harness and attach reverse wire from light bar with splice tap (not included, IDC-2218 at superbrightleds.com)

Wiring Diagram



Reverse Wire

Connect to vehicle reverse light bulb supply wire (+12 VDC).



10 A Fuse Holder

Dimensional Diagram

