

RA-IP20-Color-5m

FEATURES

- 12 or 24 VDC input available
- LED lifetime of 50,000 hours (L70)
- 10 mm overall strip width
- 3M adhesive backing
- Operating temperature of -4°-113° F (-20°-45° C)
- IP20 environmental rating

APPLICATIONS

Some common applications include sign lighting, bias lighting, cove lighting, task lighting, backlighting, accent lighting, and under cabinet lighting.

ACCESSORIES

Power Supplies



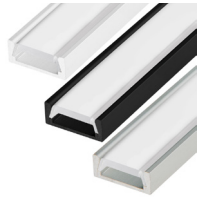
Strip Connectors



Controllers and Switches



Mounting Hardware and Housings



AVAILABLE VERSIONS

12V

- STN-BBLU-A3A-10B5M-12V
- STN-BGRE-A3A-10B5M-12V
- STN-BRED-A3A-10B5M-12V

24V

- STN-BBLU-A6A-10B5M-24V
- STN-BGRE-A6A-10B5M-24V
- STN-BRED-A6A-10B5M-24V

SAMPLE PART NUMBER BREAKDOWN

STN-BRED-A6A-10B5M-24V

| FAMILY / CATEGORY / COLOR | | | LED TYPE / SEGMENT | | IP RATING | SIZE / DENSITY / VOLTAGE | | | |
|---------------------------|------------------------|-------------------------------------|----------------------|------------------------------|-----------------------|--------------------------|---------------------|---------------------|------------------------|
| STN Strip Type | B Strip Type | RED Color | A LED Type | 6 LED/Segment | A IP Rating | 10 Strip Width | B Density | 5M Length | 24V Voltage |
| STN: Non-weatherproof | B: Single Color | BLU: Blue GRN: Green RED: Red | A: 5050 | 3: 3 LED/seg 6: 6 LED/seg | A: IP20 | 10: 10 mm | B: 60 LEDs/m | 5M: 16.4 ft (5 m) | 12V: 12 V 24V: 24 V |

SPECIFICATIONS

| Model | STN-x-A3A-10B5M-12V | x-A6A-10B5M-24V |
|-------------------|----------------------|-----------------|
| Power Consumption | 64 W (total for 5 m) | |
| Current Draw | 325 mA /ft | 163 mA /ft |
| Brightness | 305 lm/ft | |
| Efficacy | 78 lm/W | |
| Beam Angle | 120° | |
| Max Run | 16.4 ft (5 m) | 49.2 ft (15 m) |



T 314.743.3067

F 314.972.6202

email: commercial-sales@superbrightleds.com

www.superbrightleds.com/cat/industrial-led-lighting/



Specifications are subject to change without notice.

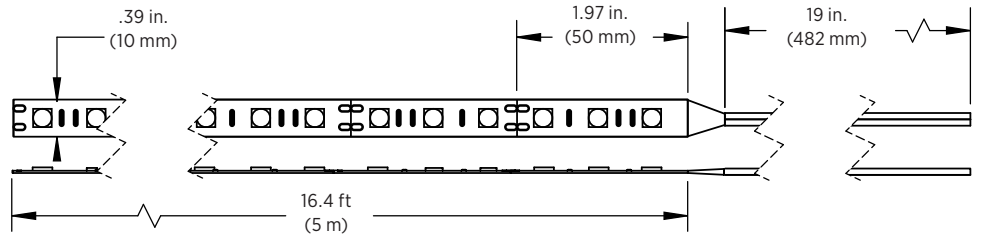
HighLight LED Strip Lights

5050 Strip Specifications

DIMENSIONAL DRAWINGS

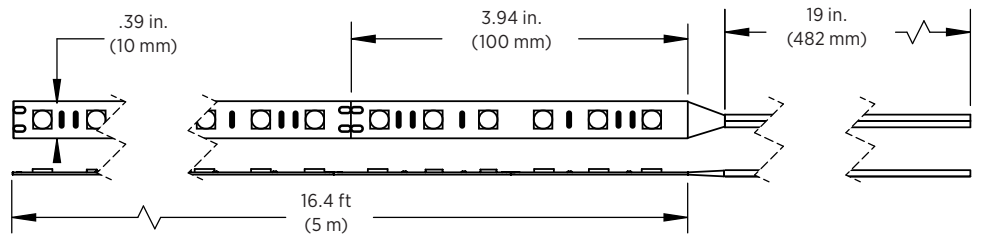
STN-x-A3A-10B5M-12V

- 16.4 ft (5 m) max run



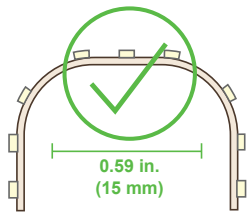
STN-x-A6A-10B5M-24V

- 49.2 ft (15 m) max run



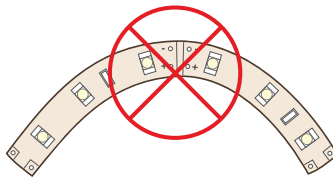
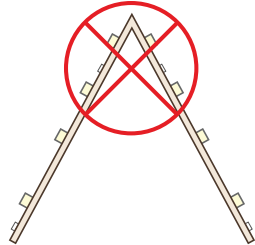
Note: The strip height for all strips shown is 0.08 in. (2 mm).

STRIP FLEXIBILITY



Bends less than 15mm will damage circuit traces and void warranty.

Bending strips at sharp angles will damage circuit traces and void warranty.



Bending strips on horizontal plane will damage circuit traces and void warranty.

NOTES



Specifications are subject to change without notice.

T 314.743.3067

F 314.972.6202

email: commercial-sales@superbrightleds.com

www.superbrightleds.com/cat/industrial-led-lighting/

