

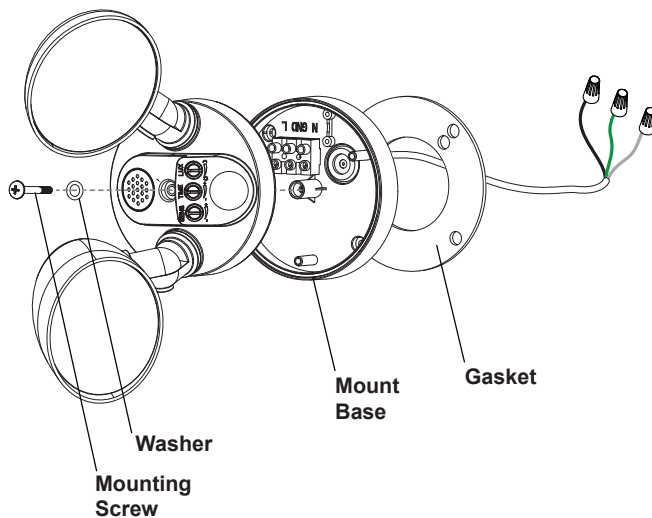
Important: Read all instructions prior to installation.

Motion Activated Security Light

Safety and Notes

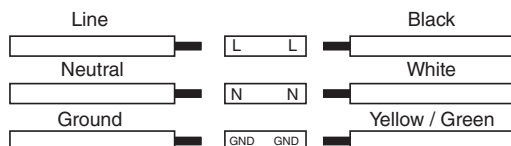
- Product should be installed and serviced by in accordance with applicable national, state, and local building and electrical codes.
- To reduce the risk of electric shock, ensure that the main power source and circuit breakers are switched off before performing any installation or wiring procedures.
- Avoid looking directly into lamp when illuminated.
- Ensure all mounts are securely attached and will support the weight of the fixture. Failure to properly support fixture may result in damage or injury, for which the manufacturer does not assume responsibility.

Installation



1. Remove supply power and remove existing fixture if retrofitting.
2. Detach rear mount base from light.
3. Insert wiring from light through center hole in foam gasket.
4. Connect wiring.
5. Apply light coat of silicone caulk to outer edge of foam gasket, sealing light to surface/junction box.
6. Attach rear mount base to junction box or wall, making sure to align it correctly as light will only attach in one position. The light should be mounted so the sensor is on the bottom of the light.
7. Attach front of light to rear mount base.
8. Restore power to circuit from electrical panel.
9. Adjust sensor as desired, then aim light heads to desired position.

Wiring Diagram

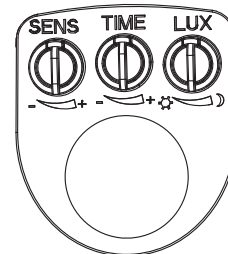


Specifications

Model	MASL-xKxW-Fx1
Operating Temperature	-4°-104° F(-20°-40° C)
IP Rating	IP65

Check product label for specific electrical specifications related to installation. Improper installation will void warranty.

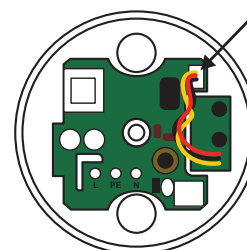
Sensor Operation



Adjustments

- **Sens** adjusts motion detection range from 1 m to 10 m.
- **Time** adjusts the duration of time the light stays on after no motion is detected from 2 seconds to 10 minutes.
- **Lux** adjusts the ambient light amount at which the light turns on automatically, from 5-500 lux.

Sensor Bypass



To disable the sensor, remove the front of the light and pry off inner cover for access. Disconnect the sensor by unplugging the connector shown in the illustration.

