

Lux LED Strip Lights

2216 Strip Specifications

Project _____

Date _____ Type _____



FEATURES

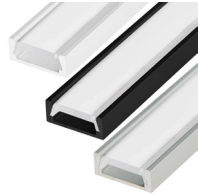
- 24 VDC Input
- 90+ CRI
- LED lifetime of 50,000 hours (L70)
- 4 mm strip width
- 3M adhesive backing
- Operating temperature of -4°-113° F (-20°-45° C)
- IP20 environmental rating

ACCESSORIES

Power Supplies



Mounting Hardware and Housings



Controllers and Switches



APPLICATIONS

Some common applications include sign lighting, bias lighting, cove lighting, task lighting, backlighting, accent lighting, and under cabinet lighting.

AVAILABLE VERSIONS

- STN-A30K90-D6A-04C5M-24V
- STN-A40K90-D6A-04C5M-24V
- STN-A50K90-D6A-04C5M-24V
- STN-A65K90-D6A-04C5M-24V

SAMPLE PART NUMBER BREAKDOWN

STN-A40K90-D6A-04C5M-24V

FAMILY / CATEGORY / COLOR				LED TYPE / SEGMENT		IP RATING	SIZE / DENSITY / VOLTAGE			
STN Strip Type	A Strip Type	40K Color	90 CRI	D LED Type	6 LED/Segment	A IP Rating	04 Strip Width	C Density	5M Length	24V Voltage
STN: Non-weatherproof	A: Single White	30K: 3000K 40K: 4000K 50K: 5000K 65K: 6500K	90: 90-94	D: 2216	6: 6 LED/seg	A: IP20	04: 4 mm	C: 120 LEDs/m	5M: 16.4 ft (5 m)	24V: 24 V

SPECIFICATIONS

Model	STN-A40K90-D8A-04C5M-24V
Power Consumption	36 W (total for 5 m)
Current Draw	92 mA/ft
Brightness	170 lm/ft
Efficacy	77 lm/W
Beam Angle	120°
Max Run	32.8 ft (10 m)



T 314.743.3067

F 314.972.6202

email: commercial-sales@superbrightleds.com

www.superbrightleds.com/cat/industrial-led-lighting/



Specifications are subject to change without notice.

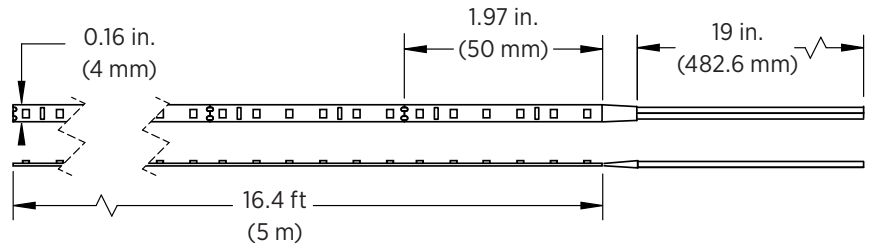
Lux LED Strip Lights

2216 Strip Specifications

DIMENSIONAL DRAWINGS

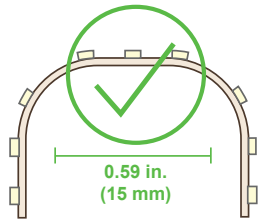
STN-AxK90-D6A-04C5M-24V

- 32.8 ft (10 m) max run



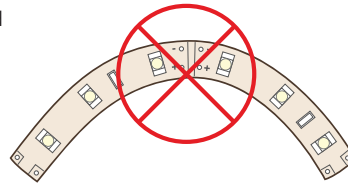
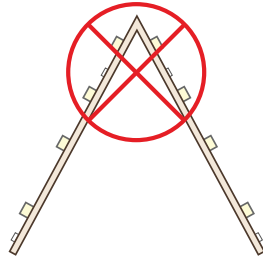
Note: The strip height for all strips shown is 0.05 in. (1.27 mm).

STRIP FLEXIBILITY



Bends less than 15mm will damage circuit traces and void warranty.

Bending strips at sharp angles will damage circuit traces and void warranty.



Bending strips on horizontal plane will damage circuit traces and void warranty.

NOTES



Specifications are subject to change without notice.

T 314.743.3067

F 314.972.6202

email: commercial-sales@superbrightleds.com

www.superbrightleds.com/cat/industrial-led-lighting/

