

Important: Read all instructions prior to installation.

LED Dimmable Panel Light with White Frame

Even-Glow™ Series

Summary

These 0-10V dimmable ETL Listed 2'x2' recessed or surface mount panel lights are perfect for new construction applications or replacing existing fluorescent troffer fixtures with recessed installation. Use Recessed Mounting Kit (LPD-JBK) for T-bar ceiling installations. Use Surface Mounting Kit (LPD-SMK22) for surface mounting installations.

Included Parts

Panel Light (LPD-40K22-40)

1 - LED Light Panel with internal driver

Recessed Mounting Kit (LPD-JBK) sold separately

1 - Junction Box

1 - Attachment Thumb Screw

Surface Mounting Kit (LPD-SMK22) sold separately

1 - Surface Mount Bracket

7 - Screws

7 - Screw Anchors

1 - Cable Service Loop

1 - Cable Service Loop Screw

Recessed Installation

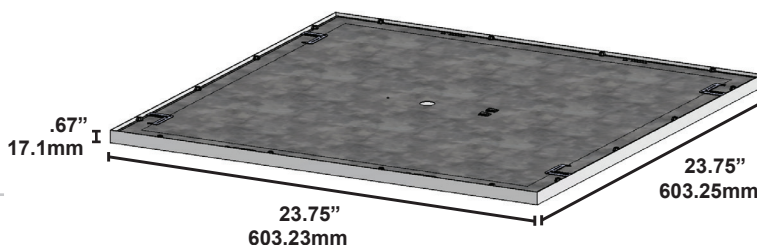
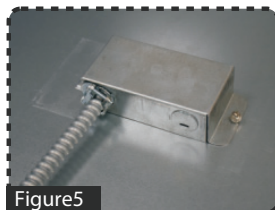
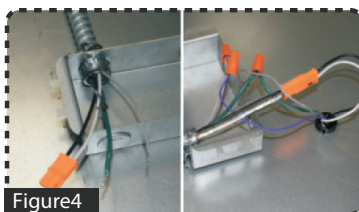
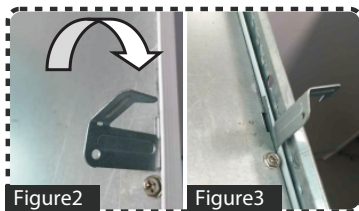
Note: Recessed Mounting Kit Required (LPD-JBK)

1. Turn off power and remove existing fixture or remove ceiling tile.

2. Bend each t-bar suspension hook away from panel until facing perpendicular to panel backing. Bend hook arm until facing perpendicular to hook body. Hook panel light onto t-bar until panel is fully supported. (Fig. 2 & 3)

3. Remove the knock-out hole on the Junction Box. Run wiring through hole and secure. Insert supply Line and Neutral power wires into corresponding locations on orange quick disconnect. Line is labeled in black, neutral is white. Connect the green ground wire to supply ground wire. Connect the two orange quick disconnects together. Connect the 0-10V dimming wires according to the Wiring Diagram with wire nuts. (Fig. 4)

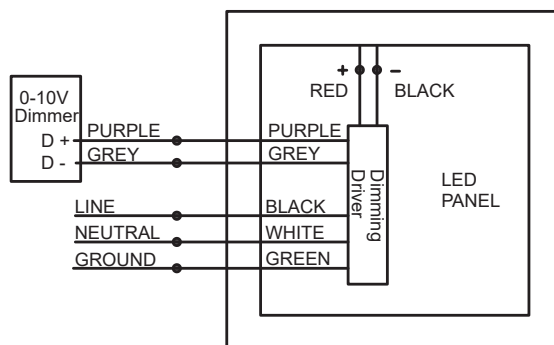
4. Attach Junction Box to panel backing by inserting the tabs from the Junction Box into the slots on the panel backing and secure with Thumb Screw. (Fig. 5)



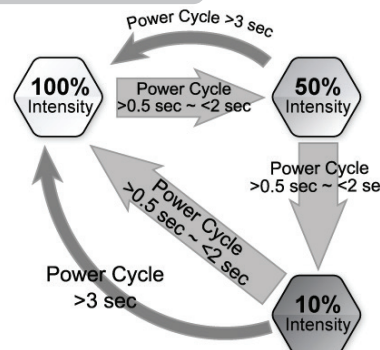
Specifications

Input Voltage	100-277 VAC
Input Power	40 Watts
Actual Input Power	40 Watts
Input Current	342mA
Lumens	4400 lm
Color Temperature	4000K
CRI	83.4
Efficacy	112.23 lm/w
Temperature Range	-4° ~ 104° F (-20° ~ 40°C)
Dimensions	L23.75" x W23.75" x H.67" (60.3 x 60.3 x 1.7cm)
Weight	8 lbs 2oz (3685g)
J-Box Mounting Plate Weight	5lbs 4oz (2381g)
Warranty	5 years

Wiring Diagram



Power Cycle Diagram



* No Power Retention Saving

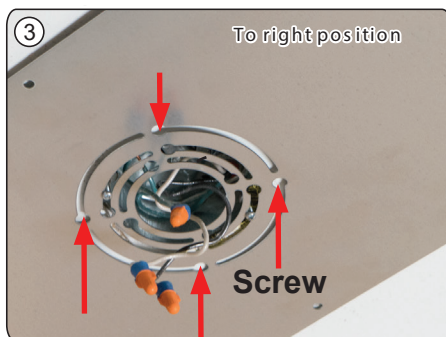
Surface Mounted Kit Installation

1. Remove Surface Mounting Kit and panel from packaging.

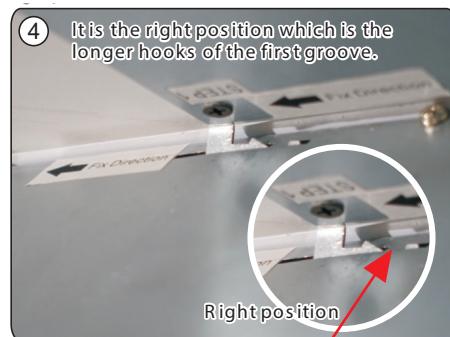
2. Turn off power and run supply wiring through J-box. Insert supply line and neutral power wires into corresponding locations on orange quick disconnect. Line is labeled in black, neutral is white. (Fig. 2)



3. Temporarily attach Surface Mounting Kit to J-box and align to the desired orientation. Mark screw holes and drill pilot holes then remove Surface Mounting Kit. Insert screw anchors into mounting surface at marks. Reinstall Surface Mounting Kit to junction box and install screws to screw anchors. (Fig. 3)



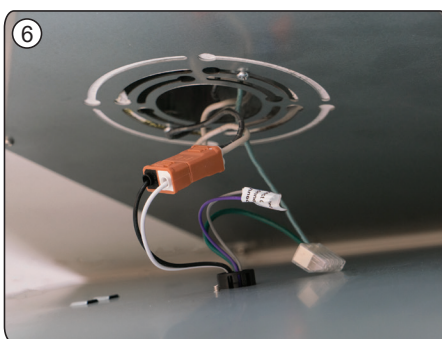
4. Screw Steel Cable Service Loop to light panel (see Fig.5). Align the longer hooks labeled "Step 1" on the Surface Mounting Bracket to the larger slots along the edge of the panel backing labeled "Step 1" and slide to the first notch. (Fig. 4)



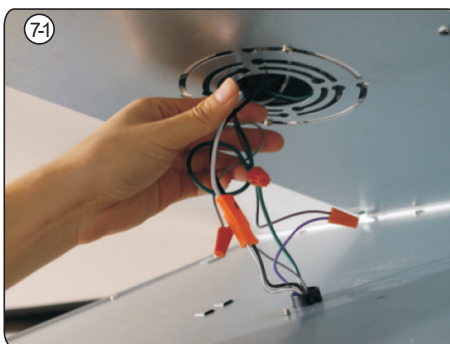
5. Attach the Steel Cable Service Loop from the panel to one of the Surface Mount Kit hooks. Loop holds the panel while wiring. (Fig. 5)



6. Connect the green ground wire to supply ground wire. Connect the two orange quick disconnects together. Connect the 0-10V dimming wires according to the Wiring Diagram with wire nuts. (Fig. 6)



7. Tuck wiring into junction box being sure not to pinch wires. (Fig. 7-1 & 7-2)



8. Lift panel onto remaining hooks on Surface Mounting Bracket while aligning to remaining slots on panel. Slide panel the same direction as step 4 until the panel locks into the second notch. (Fig. 8-1 & 8-2)



Safety Information

CAUTION! Risk Of Electric Shock

Turn off all power prior to installation by switching off circuit breaker or removing fuse at fuse box.

- This product should be installed by a fully certified electrician in accordance with local building and electrical codes
- Due to risk of electric shock, ensure that the main power source and circuit breakers are switched off before performing any installation or wiring procedures
- Do not install insulation within 2 in / 51mm of any part of the panel light fixture.