

Important: Read all instructions prior to installation.

## Wireless Variable Color Temperature LED Dimmer Switch for Easy Dimmer Receiver

### Parts Included

- 1 - 868MHz VCT LED Dimmer Wall Switch
- 1 - Sync-able VCT LED Light Strip Receiver
- 1 - 3V CR2032 Battery with Tray
- 2 - Mounting Bolts

### Wall Panel Remote

1. On/Off/Color Temperature/Brightness Push Dial  
Push dial for remotely activating/controlling light strips.

#### Dial Actions:

Single Push	Turns light on/off. If the receiver learning key has been depressed, a single dial push on the wall panel switch links the switch to the receiver.
Double Push	Alternates between color temperature mode and dimming mode.
Left/Right Movement	During color temperature mode, scrolls through cool white (dial left) to natural white (middle) to warm white (dial right). During dimming mode, controls LED brightness level.
Hold Push	Increases light to max brightness. Dial down to set max brightness for color temperature mode.

2. Color Gradient

Visual key representing specific dial colors, from cool white (dial left) to warm white (dial right).

3. Dimming Level

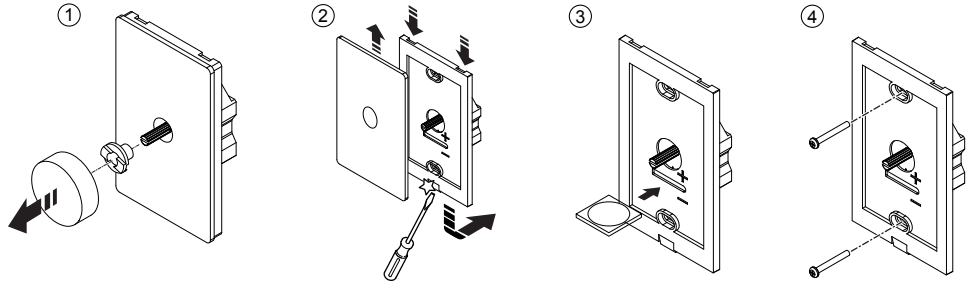
Visual key representing the dial brightness level.

4. Learning Key

To link wall switch to receiver, push once and then push wall switch. Lights will blink once to indicate linking. To delink wall switch(es), push and hold until lights blink twice.

### Dimmer Wall Switch Installation Steps

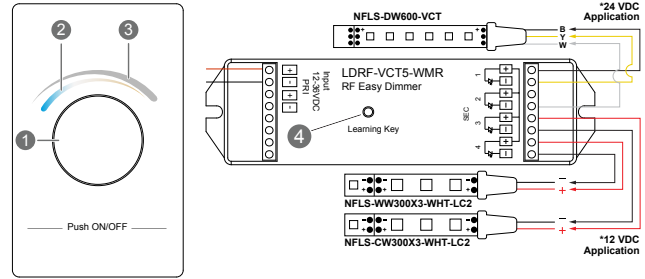
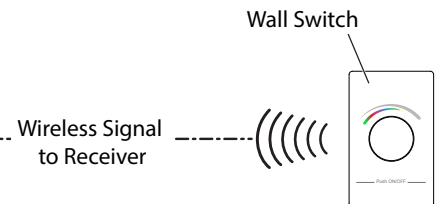
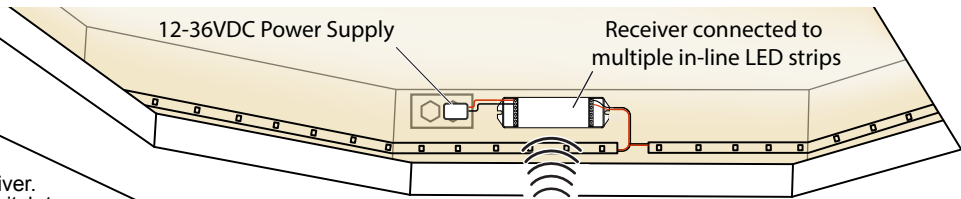
1. Pull off dial and collar from front plate.
2. Using a flat head screwdriver, pry rear switch housing away from front plate.
3. Insert battery with tray into slot, matching the polarity on the battery with the slot labels.
4. Fasten wall switch using mounting bolts.



### Cove Lighting Application

#### Operating the Wall Switch/Receiver

1. Press "Learning Key" button on the receiver. Immediately press the dial on the wall switch to link it to the receiver. The LED lights wired to the receiver will blink when the linking is complete.
2. Push the dial twice rapidly to switch from color temperature mode to brightness mode and back.
3. Multiple wall switches can be linked to a receiver, and wall switches can be linked to multiple receivers. If multiple receivers linked to a wall switch are not in sync, unlink and then relink until receivers and lights are in sync.



LDRF-VCT5-WMR VCT LED Dimmer Wall Switch	
Operating Voltage	Operating Frequency
3VDC	434MHz/868MHz

LDRF-VCT5-WMR VCT LED Receiver		
Input Voltage	Current	Output Voltage
12-36VDC	4X5A	4X(60-180)W

### Safety

- DO NOT install with power applied to controller.
- DO NOT expose the remote or controller to direct or indirect moisture.

### Set-Up Instructions

#### Remote

1. Follow illustrated steps to remove the front face plate. Insert the 3V battery included with the remote.

#### Controller

1. Make sure power to the controller is disconnected.
2. Using a small flathead screwdriver, loosen the labeled clamp screws visible on the top of the controller.
3. Matching light strip wires with labeled slots on the controller, insert wires and tighten clamp screws.
4. Turn power on and wait until light strip illuminates. If no illumination occurs, check light strips and wiring connections.

