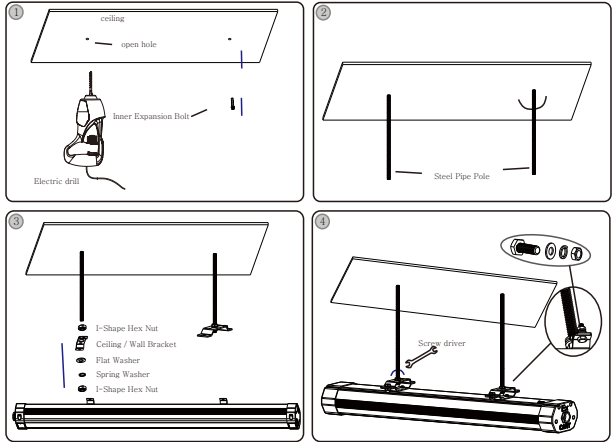
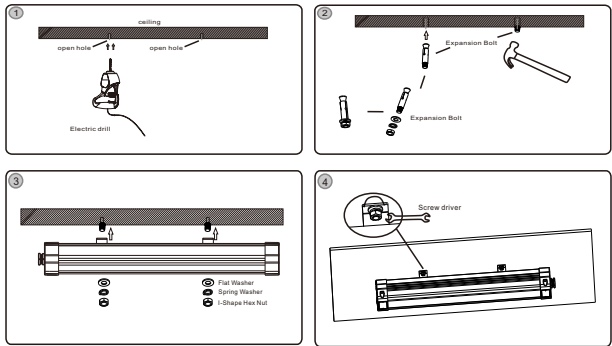


MOUNTING INSTRUCTIONS

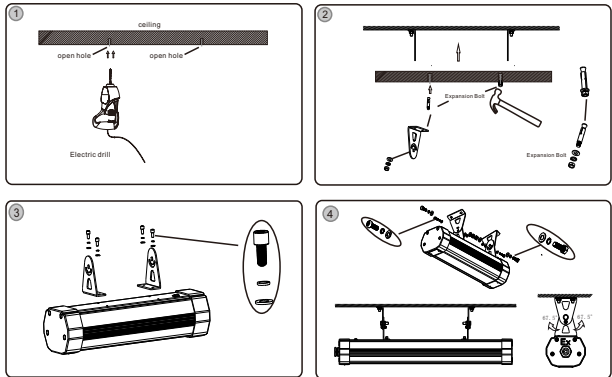
1-Pendant Pole Mount



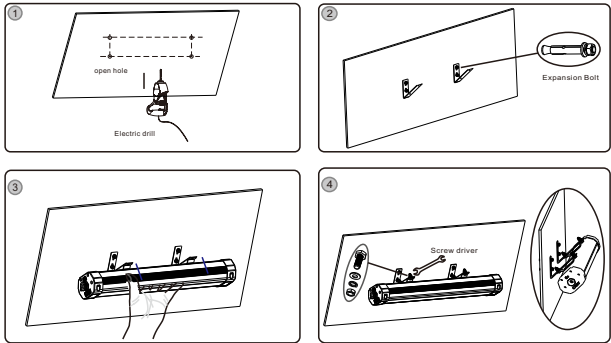
2-Ceiling Mount A



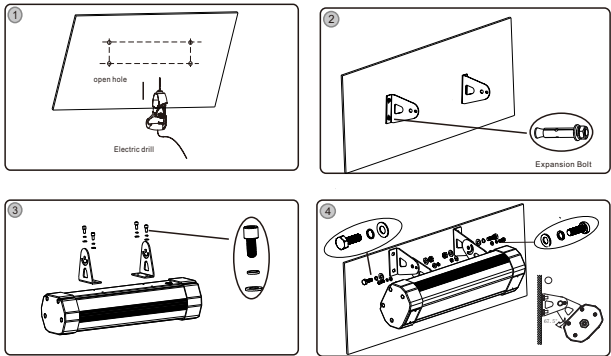
3-Ceiling Mount B (adjustable angles)



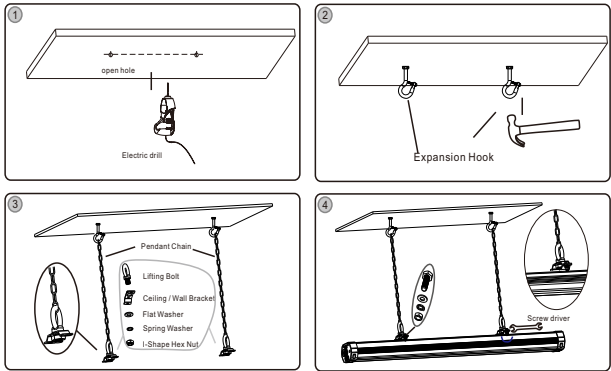
4-Wall Mount A



5-Wall Mount B (adjustable angles)



6-Pendant Chain Mount



CARY SHENZHEN CARY TECHNOLOGY CO.,LTD.



LUMINAIRE FOR HAZARDOUS LOCATIONS

—KLE1011



IP66
USER MANUAL



RoHS

TECHNICAL PARAMETER

Product Model : KLE1011

Light Source : LED

Power Rating : 56W

Voltage Rating : AC100-277V/50-60Hz

Power Factor : 0.95

CCT : 5000K

CRI : 70

Ex-marks : Class I, Division 2, Groups A, B, C and D
Class II, Division 2, Groups F and G
Class III

LED lifespan : 50000h

IPRating : IP66

Size of Input Cable : Dia.Φ10mm , 3×2.5mm²

MATERIALS & FEATURES

- 1. Using the international branded LED as the lighting source, all of our lamps are of high light efficiency , low light-declining and long lifespan.
- 2. Scientific light distribution with light soft and more beam angles optional for different places.
- 3. Reasonable ,stable and durable lamp structure with the streamlined design, easily combined to different power according to the length.
- 4.The transparent parts are made of high quality materials with high light transmittance, non-glare & high resistance to shock.
- 5.Wide input voltage design and instant start;Constant power output;Illumination holds steady upon voltage fluctuation.
- 6.The main cooling material is made of high thermal conductivity aluminum alloy with unique three-dimensional design for the heat radiation to achieve maximum heat emission,reduce the temperature inside the light and prolong the working life.
- 7.Scientific seal structure design,No water intake in harsh environment with good waterproof performance.

APPLICATIONS

- 1.Applies to explosive gas and combustible dust area in petroleum, metallurgy industries.
- 2.Applies to hazardous location of
Class I, Division 2, Groups A, B, C and D,Class II, Division 2, Groups F and G and Class III.

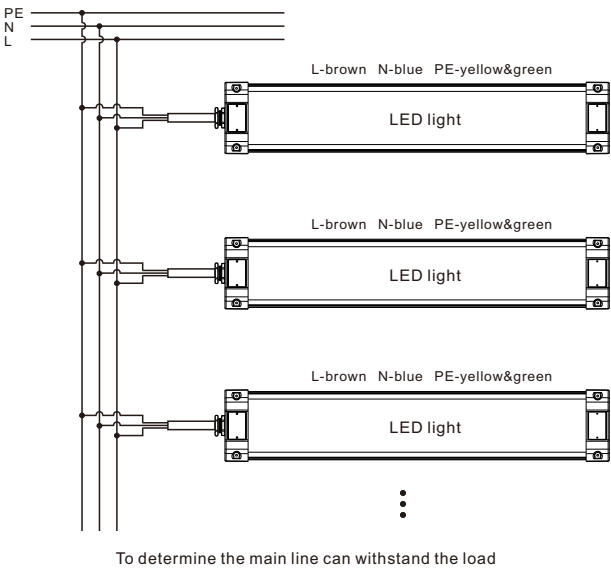
CAUTION

- In order to ensure a perfect quality of the product and a safe usage.Please kindly follow the instructions.
- 1.Before opening the package,please check if there's damage or defect during transportation, if damage occurs,please don't use it and inform your supplier immediately.
 - 2.Should the product be found damaged in any way,please keep it in package and contact your supplier in time.
 - 3. Please do not attempt to use a damaged product.
 - 4.The product should be installed,dismantled and maintained by a qualified electrician;Suppliers

- don't take charge of any problems or damages that occur due to mishandling such as an operation not permitted in this instruction.
- 5.Choose an install place where can withstand 10 times the weight of the product to ensure a solid installation.
 - 6.Don't cover the fixtures with flammable materials.
 - 7.Please check the local voltage in accordance with the product equirements before using the product
 - 8. Don't connect cables with powered-on;make sure a correct connection and no short circuit checked with instrument before powered-on.
 - 9.Make sure NO extra force or stress on aluminum frame to avoid deformation.
 - 10.Misuse of, or changes to the fixture shall nullify the guarantee.
 - 11.When a lamp is to be cleaned, make the power off and let it cool down completely.Clean the fixture with a soft cloth and a standard PH neutral detergent. Stainless steel finishing should be maintained regularly.
 - 12.Exclusively replaced by the manufacturer or his service agent or the similar qualified person in order to avoid a hazard.
 - 13.Relamping only can be done when the power is off and the lamp is completely cooled down.
- This instruction applies to this model product only,for more information,please contact our staff.

SYSTEM CONNECTION DIAGRAM

1.Wiring of the LED Explosion Proof light with normal(standard)



2.Wiring of the LED Explosion Proof light with emergency.

