

HL-IP20-Color-5m

FEATURES

- 12 or 24 VDC input available
- Multiple density options
- LED lifetime of 50,000 hours (L70)
- 10 mm strip width
- 3M adhesive backing
- Operating temperature of -4°-113° F (-20°-45° C)
- IP20 environmental rating

APPLICATIONS

Some common applications include sign lighting, bias lighting, cove lighting, task lighting, backlighting, accent lighting, and under cabinet lighting.

ACCESSORIES

Power Supplies



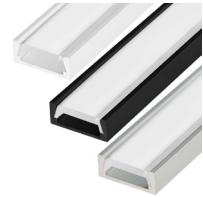
Strip Connectors



Controllers and Switches



Mounting Hardware and Housings



AVAILABLE VERSIONS

18 LEDs/ft (60 LEDs/m)

- STN-BBLU-C3A-10B5M-12V
- STN-BBLU-C6A-10B5M-24V
- STN-BGRE-C3A-10B5M-12V
- STN-BGRE-C6A-10B5M-24V
- STN-BRED-C3A-10B5M-12V
- STN-BRED-C6A-10B5M-24V

36 LEDs/ft (120 LEDs/m)

- STN-BBLU-C3A-10C5M-12V
- STN-BBLU-C6A-10C5M-24V
- STN-BGRE-C3A-10C5M-12V
- STN-BGRE-C6A-10C5M-24V
- STN-BRED-C3A-10C5M-12V
- STN-BRED-C6A-10C5M-24V

SAMPLE PART NUMBER BREAKDOWN

STN-BRED-C6A-10C5M-24V

FAMILY / CATEGORY / COLOR			LED TYPE / SEGMENT		IP RATING	SIZE / DENSITY / VOLTAGE			
STN Strip Type	B Strip Type	RED Color	C LED Type	6 LED/Segment	A IP Rating	10 Strip Width	C Density	5M Length	24V Voltage
STN: Non-weatherproof	B: Single Color	BLU: Blue GRN: Green RED: Red	C: 2835	3: 3 LED/seg 6: 6 LED/seg	A: IP20	10: 10 mm	B: 60 LEDs/m C: 120 LEDs/m	5M: 16.4 ft (5 m)	12V: 12 V 24V: 24 V

SPECIFICATIONS

Model	STN-Bx-C3A-10B5M-12V	Bx-C6A-10B5M-24V	Bx-C3A-10C5M-12V	Bx-C6A-10C5M-24V
Power Consumption	59 W (total for 5 m)		69 W (total for 5 m)	
Current Draw	300 mA /ft	150 mA /ft	350 mA/ft	175 mA /ft
Brightness	310 lm/ft		395 lm/ft	
Efficacy	86 lm/W		94 lm/W	
Beam Angle	120°			
Max Run	32.8 ft (10 m)	49.2 ft (15 m)	16.4 ft (5 m)	32.8 ft (10 m)



T 314.743.3067

F 314.972.6202

email: commercial-sales@superbrightleds.com

www.superbrightleds.com/cat/industrial-led-lighting/



Specifications are subject to change without notice.

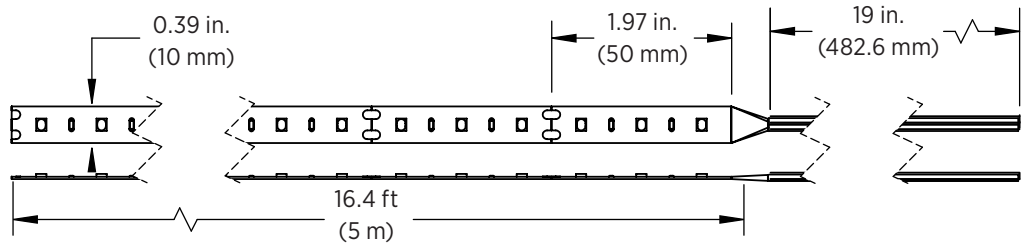
HighLight LED Strip Lights

2835 Strip Specifications

DIMENSIONAL DRAWINGS

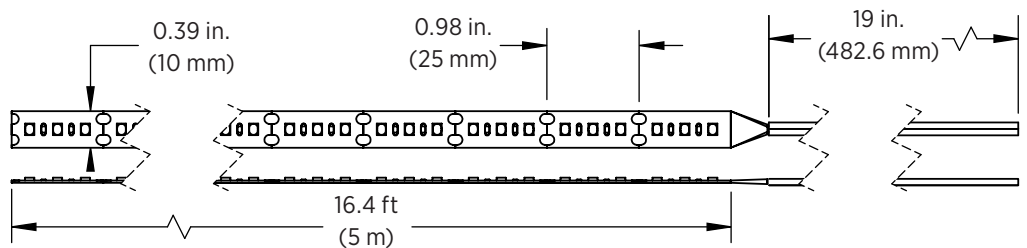
STN-x-C3A-10B5M-12V

- 32.8 ft (10 m) max run



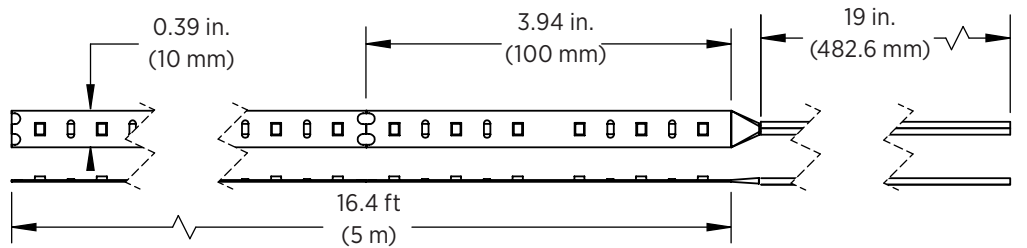
STN-x-C3A-10C5M-12V

- 16.4 ft (5 m) max run



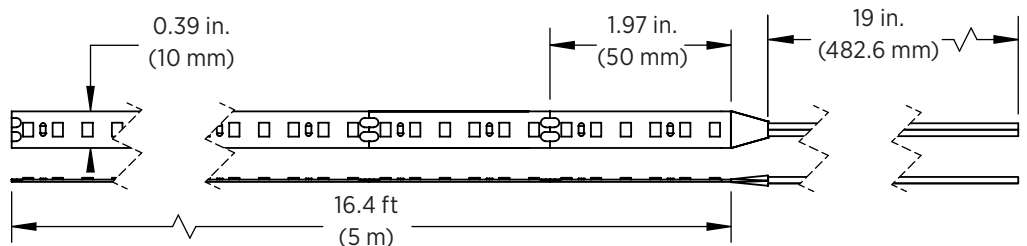
STN-x-C6A-10B5M-24V

- 49.2 ft (15 m) max run



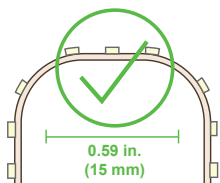
STN-x-C6A-10C5M-24V

- 32.8 ft (10 m) max run

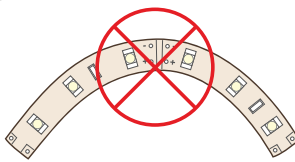
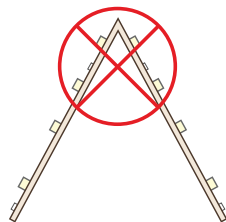


STRIP FLEXIBILITY

Bending strips at sharp angles will damage circuit traces and void warranty.



Bends less than 15mm will damage circuit traces and void warranty.



Bending strips on horizontal plane will damage circuit traces and void warranty.



Specifications are subject to change without notice.

T 314.743.3067

F 314.972.6202

email: commercial-sales@superbrightleds.com

www.superbrightleds.com/cat/industrial-led-lighting/

