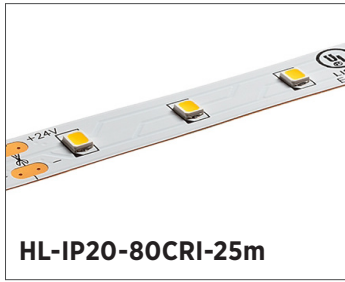


## HighLight LED Strip Lights

2835 Strip Specifications

Project \_\_\_\_\_

Date \_\_\_\_\_ Type \_\_\_\_\_



### FEATURES

- 24 VDC input available
- 80+ CRI
- LED lifetime of 50,000 hours (L70)
- Contractor length 25 meter max run
- 10 mm strip width
- 3M adhesive backing
- Operating temperature of -4°-113° F (-20°-45° C)
- IP20 environmental rating

### ACCESSORIES

Power Supplies



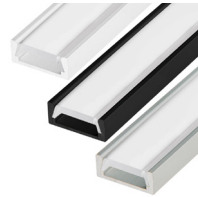
Strip Connectors



Controllers and Switches



Mounting Hardware and Housings



### APPLICATIONS

Some common applications include sign lighting, bias lighting, cove lighting, task lighting, backlighting, accent lighting, and under cabinet lighting.

### AVAILABLE VERSIONS

- STN-A30K80-C6A-10B25M-24V
- STN-A40K80-C6A-10B25M-24V
- STN-A65K80-C6A-10B25M-24V

### SAMPLE PART NUMBER BREAKDOWN

## STN-A40K80-C6A-10B25M-24V

FAMILY / CATEGORY / COLOR				LED TYPE / SEGMENT		IP RATING	SIZE / DENSITY / VOLTAGE			
<b>STN</b> Strip Type	<b>A</b> Strip Type	<b>40K</b> Color	<b>80</b> CRI	<b>C</b> LED Type	<b>6</b> LED/Segment	<b>A</b> IP Rating	<b>10</b> Strip Width	<b>B</b> Density	<b>25M</b> Length	<b>24V</b> Voltage
STN: Non-weatherproof	A: Single White	30K: 3000K 40K: 4000K 65K: 6500K	80: 80-84	C: 2835	6: 6 LED/seg	A: IP20	10: 10 mm	B: 60 LEDs/m	25M: 82 ft (25 m)	24V: 24 V

### SPECIFICATIONS

Model	STN-AxK80-C6A-10B25M-24V
Power Consumption	57 W (total for 25 m)
Current Draw	30 mA/ft
Brightness	70 lm/ft
Efficacy	100 lm/W
Beam Angle	120°
Max Run	82 ft (25 m)



T 314.743.3067

F 314.972.6202

email: commercial-sales@superbrightleds.com

www.superbrightleds.com/cat/industrial-led-lighting/



Specifications are subject to change without notice.

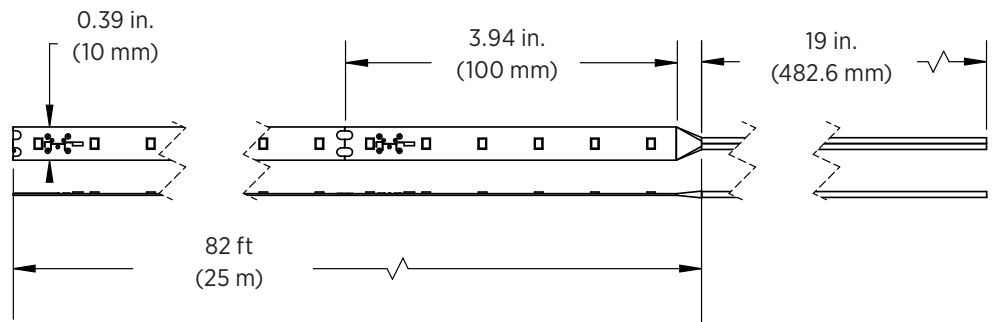
## HighLight LED Strip Lights

2835 Strip Specifications

### DIMENSIONAL DRAWINGS

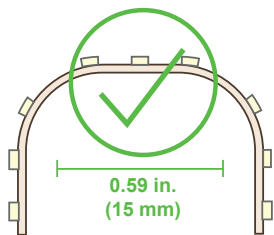
STN-AxK80-C6A-10B25M-24V

- 82 ft (25 m) max run



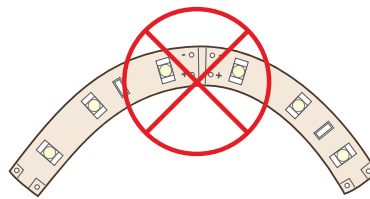
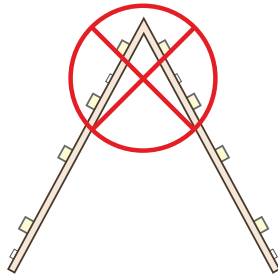
Note: The strip height for all strips shown is 0.06 in. (1.5 mm).

### STRIP FLEXIBILITY



Bends less than 15mm will damage circuit traces and void warranty.

Bending strips at sharp angles will damage circuit traces and void warranty.



Bending strips on horizontal plane will damage circuit traces and void warranty.

### Notes



Specifications are subject to change without notice.

T 314.743.3067

F 314.972.6202

email: [commercial-sales@superbrightleds.com](mailto:commercial-sales@superbrightleds.com)

[www.superbrightleds.com/cat/industrial-led-lighting/](http://www.superbrightleds.com/cat/industrial-led-lighting/)

