

**Important: Read all instructions prior to installation.**

# Wi-Fi Compatible RGBW LED Multi-Zone Flood Light with Remote

## Parts Included

- 1 - FL-RGBWW50-MZ
- 1 - MZ-RGB-REMOTE

## Wireless Remote

### 1. Master On(-)/Off(O)

Acts as a master On(-)/Off(O) control for all paired RGB(W) lights. Also activates the "Master" function, which allows the remote to control the RGB(W) lights of all zones. If a zone is currently active, pressing the master On(-) button restores the "Master" function to the remote.

### 2. Color Selection Ring

Directly selects color along a circular spectrum. To obtain white light only, keep the "Zone On" (I) button depressed until the light changes to a steady bright white.

### 3. Selection LED Indicator

Flashes once to indicate when a command has been selected.

### 4. Brightness Touch Slider - Increase(Right Side)/Decrease(Left Side)

Increases(right side) or decreases(left side) the brightness level. Changing the active mode resets the brightness level to full.

### 5. Mode Start/Scroll(M)

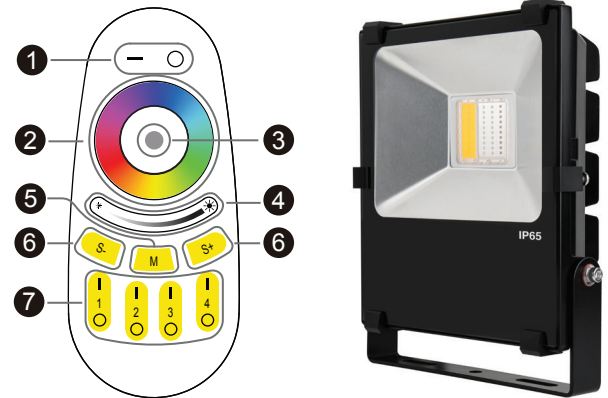
Modes feature different color combinations, light transitions, and patterns, with 9 distinct modes. This button initiates the Mode function and scrolls through the modes in ascending order.

### 6. Mode Speed Increase(S+)/Decrease(S-)

Increases (S+)/decreases(S-) the tempo of the mode pattern currently active.

### 7. Zone On(I)/Off(O) - Zones 1-4

Allows up to four "zones" (i.e. channels) of RGBW lights to be separately paired, and controlled by the remote. Pressing one of the Zone On(I) buttons activates that zone; commands will affect only lights in that zone. Once paired to a zone, lights remain paired until they are unpaired. Steadily depressing the Zone On(I) button restores the lights in that zone to white.



## Specifications

Operating Voltage Range	100-240 VAC
Wattage	50 Watts
Operating Temperature Range	-4~140° F (-20~60° C)
IP Rating	Weatherproof IP65
White Color Temperature (WW, CW)	3000K, 6700K
LED Type	40x40mm RGBW COB
Maximum Receiving Range	100 feet (30m)
RF Operating Frequency	2.4 Ghz
Lens Material	Glass
Body Material	Aluminum
Dimensions	7.6"W x 8.2"H x 2.8"D (19cm x 21cm x 7cm)
FCC ID	2AFRVFC24GRMT4
Batteries	2 x AAA
Warranty	3 Years

## Safety

- DO NOT use with wall dimmers, relays or other control circuits.

## Set-Up Instructions

- Install 2 AAA batteries (not included) in the wireless remote.
- Plug the light into the circuit. If light does not illuminate, check power connections.
- The RGB(W) light is ready for pairing to the wireless remote.

## Pairing Lights to Remote Control

RGBW lights are controlled exclusively by the MZ-RGB-REMOTE and/or WIFI-CON.

### Pairing a Light to the Remote

- Switch off the main power supply to the light.
- Restore power and within 3 seconds, choosing one of the "Zone On" (I) buttons, depress the button until the light begins flashing. It will flash white 2 times, indicating that the light is now paired to that numbered zone and can be controlled via the remote.

### Activating a Zone

To activate a specific zone, depress the "Zone On" (I) button. The zone is now active and remote commands will only affect lights paired to that zone.

### Unpairing a Light to the Remote

- Switch off the main power supply to the light.
- Restore power and within 3 seconds, depress the "Master On" (-) button until the light flashes 10 times, indicating that the light has been unpaired.

An unlimited number of RGBW lights can be paired to a zone, and all lights paired to that zone will respond to the commands entered on the wireless remote. Conversely, a single RGBW light can be paired to up to four remotes. When the light is unpaired, it will be unpaired to all remotes.

Note: The wireless remote operates using radio frequency. The remote controller's use is not restricted by normal obstructions such as walls, doors, etc. Once paired they can be installed anywhere in range of the remote (up to 100 ft. or 30m).

## Modes

	Mode	Description	Additional Control(s)
1	Low Level White	Static White	Brightness
2	6-Color Fade	Six smooth fade in/out color changes	Speed/Brightness
3	Solid RGB White	Static RGB White	Brightness
4	Red Fade In/Out	Red smooth fade in/out	Speed
5	Green Fade In/Out	Green smooth fade in/out	Speed
6	Blue Fade In/Out	Blue smooth fade in/out	Speed
7	Yellow Fade In/Out	Yellow smooth fade in/out	Speed
8	Amber Fade In/Out	Amber smooth fade in/out	Speed
9	Magenta Fade In/Out	Magenta smooth fade in/out	Speed

## FCC Statement

This device complies with part 15 of the FCC Rules. Operation is subject to the following two conditions: (1) This device may not cause harmful interference, and (2) This device must accept any interference received, including interference that may cause undesired operation. Any changes or modifications in construction of this device which are not expressly approved by the party responsible for compliance could void the user's authority to operate the equipment.

