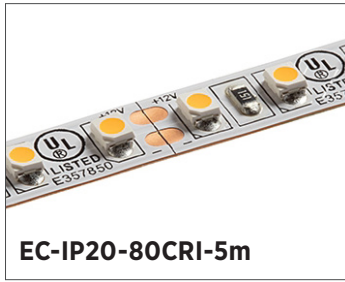


Eco LED Strip Lights

3528 Strip Specifications

Project _____

Date _____ Type _____



FEATURES

- 12 or 24 VDC input available
- 80+ CRI
- Multiple density options
- LED lifetime of 50,000 hours (L70)
- 8 mm strip width
- 3M adhesive backing
- Operating temperature of -4°-113° F (-20°-45° C)
- IP20 environmental rating

ACCESSORIES

Power Supplies



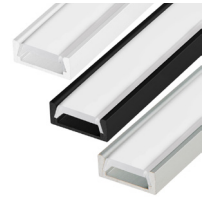
Strip Connectors



Controllers and Switches



Mounting Hardware and Housings



APPLICATIONS

Some common applications include sign lighting, bias lighting, cove lighting, task lighting, backlighting, accent lighting, and under cabinet lighting.

AVAILABLE VERSIONS

18 LEDs/ft (60 LEDs/m)

- STN-A24K80-B3A-08B5M-12V
- STN-A30K80-B3A-08B5M-12V
- STN-A40K80-B3A-08B5M-12V
- STN-A50K80-B3A-08B5M-12V
- STN-A65K80-B3A-08B5M-12V
- STN-A24K80-B6A-08B5M-24V
- STN-A30K80-B6A-08B5M-24V
- STN-A40K80-B6A-08B5M-24V
- STN-A50K80-B6A-08B5M-24V
- STN-A65K80-B6A-08B5M-24V

36 LEDs/ft (120 LEDs/m)

- STN-A24K80-B3A-08C5M-12V
- STN-A30K80-B3A-08C5M-12V
- STN-A40K80-B3A-08C5M-12V
- STN-A50K80-B3A-08C5M-12V
- STN-A65K80-B3A-08C5M-12V
- STN-A24K80-B6A-08C5M-24V
- STN-A30K80-B6A-08C5M-24V
- STN-A40K80-B6A-08C5M-24V
- STN-A50K80-B6A-08C5M-24V
- STN-A65K80-B6A-08C5M-24V

SAMPLE PART NUMBER BREAKDOWN

STN-A40K80-B6A-08C5M-24V

FAMILY / CATEGORY / COLOR				LED TYPE / SEGMENT		IP RATING	SIZE / DENSITY / VOLTAGE			
STN Strip Type	A Strip Type	40K Color	80 CRI	B LED Type	6 LED/Segment	A IP Rating	08 Strip Width	C Density	5M Length	24V Voltage
STN: Non-weatherproof	A: Single White	24K: 2400K 30K: 3000K 40K: 4000K 50K: 5000K 65K: 6500K	80: 80-84	B: 3528	3: 3 LED/seg 6: 6 LED/seg	A: IP20	08: 8 mm	B: 60 LEDs/m C: 120 LEDs/m	5M: 16.4 ft (5 m)	12V: 12 V 24V: 24 V

SPECIFICATIONS

Model	STN-AxK80-B3A-08B5M-12V	STN-AxK80-B6A-08B5M-24V	STN-AxK80-B3A-08C5M-12V	STN-AxK80-B6A-08C5M-24V
Power Consumption	23 W (total for 5 m)		47 W (total for 5 m)	48 W (total for 5 m)
Current Draw	116 mA /ft	58 mA /ft	242 mA/ft	121 mA /ft
Brightness	115 lm/ft		220 lm/ft	
Efficacy	76 lm /W	79 lm /W	82 lm /W	
Beam Angle	120°			
Max Run	16.4 ft (5 m)	49.2 ft (15 m)	16.4 ft (5 m)	32.8 ft (10 m)



T 314.743.3067

F 314.972.6202

email: commercial-sales@superbrightleds.com

www.superbrightleds.com/cat/industrial-led-lighting/



Specifications are subject to change without notice.

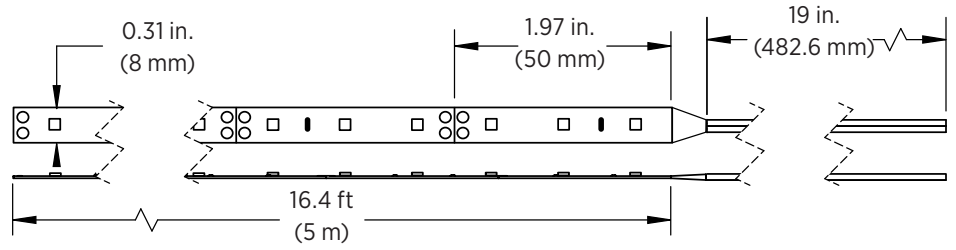
Eco LED Strip Lights

3528 Strip Specifications

DIMENSIONAL DRAWINGS

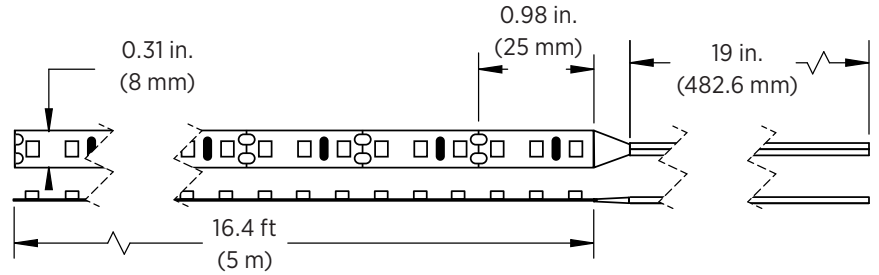
STN-AxK80-B3A-08B5M-12V

- 16.4 ft (5 m) max run



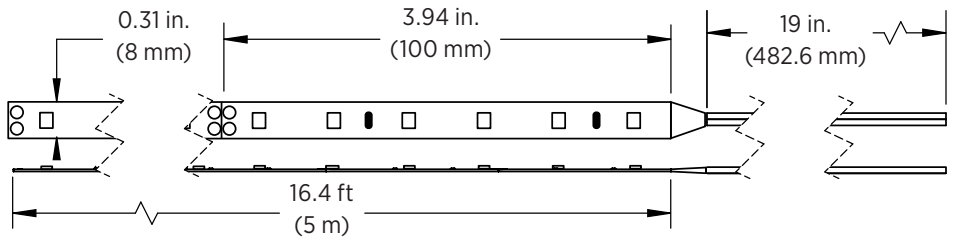
STN-AxK80-B3A-08C5M-12V

- 16.4 ft (5 m) max run



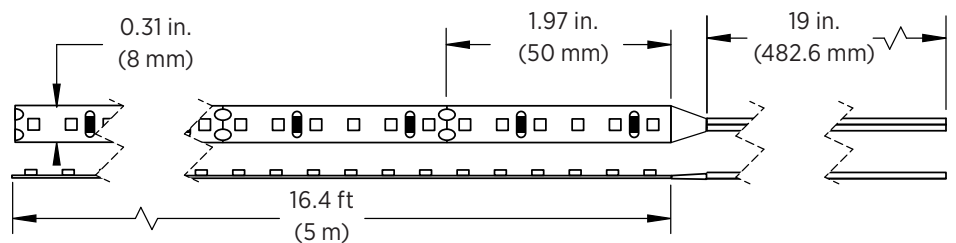
STN-AxK80-B6A-08B5M-24V

- 49.2 ft (15 m) max run



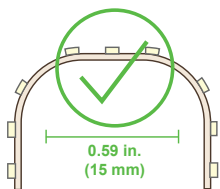
STN-AxK80-B6A-08C5M-24V

- 32.8 ft (10 m) max run



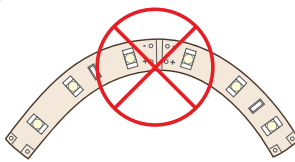
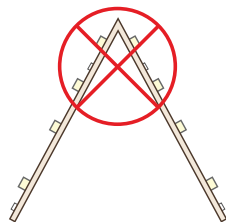
Note: The strip height for all strips shown is 0.08 in. (2 mm).

STRIP FLEXIBILITY



Bends less than 15mm will damage circuit traces and void warranty.

Bending strips at sharp angles will damage circuit traces and void warranty.



Bending strips on horizontal plane will damage circuit traces and void warranty.



Specifications are subject to change without notice.

T 314.743.3067

F 314.972.6202

email: commercial-sales@superbrightleds.com

www.superbrightleds.com/cat/industrial-led-lighting/

