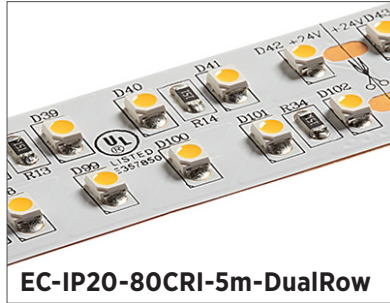


Eco LED Strip Lights

3528 Strip Specifications

Project _____

Date _____ Type _____



EC-IP20-80CRI-5m-DualRow

FEATURES

- 24 VDC input available
- 80+ CRI
- LED lifetime of 50,000 hours (L70)
- 20 mm strip width
- 3M adhesive backing
- Operating temperature of -4°-113° F (-20°-45° C)
- IP20 environmental rating

APPLICATIONS

Some common applications include sign lighting, bias lighting, cove lighting, task lighting, backlighting, accent lighting, and under cabinet lighting.

ACCESSORIES

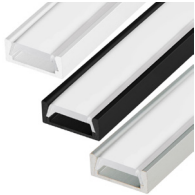
Power Supplies



Controllers and Switches



Mounting Hardware and Housings



AVAILABLE VERSIONS

- STN-A30K80-B12A-20D5M-24V
- STN-A40K80-B12A-20D5M-24V
- STN-A50K80-B12A-20D5M-24V
- STN-A60K80-B12A-20D5M-24V
- STN-A65K80-B12A-20D5M-24V

SAMPLE PART NUMBER BREAKDOWN

STN-A40K80-B12A-20D5M-24V

FAMILY / CATEGORY / COLOR				LED TYPE / SEGMENT		IP RATING	SIZE / DENSITY / VOLTAGE			
STN	A	40K	80	B	12	A	20	D	5M	24V
Strip Type	Strip Type	Color	CRI	LED Type	LED/Segment	IP Rating	Strip Width	Density	Length	Voltage
STN: Non-weatherproof	A: Single White	30K: 3000K 40K: 4000K 50K: 5000K 60K: 6000K 65K: 6500K	80: 80-84	B: 3528	12: 12 LED/seg	A: IP20	20: 20 mm	D: 240 LEDs/m	5M: 16.4 ft (5 m)	24V: 24 V

SPECIFICATIONS

Model	STN-AxK80-B12A-20D5M-24V
Power Consumption	95 W (total for 5 m)
Current Draw	242 mA/ft
Brightness	520 lm/ft
Efficacy	90 lm/W
Beam Angle	120°
Max Run	32.8 ft (10 m)



T 314.743.3067

F 314.972.6202

email: commercial-sales@superbrightleds.com

https://www.superbrightleds.com/cat/led-strips-and-bars/



Specifications are subject to change without notice.

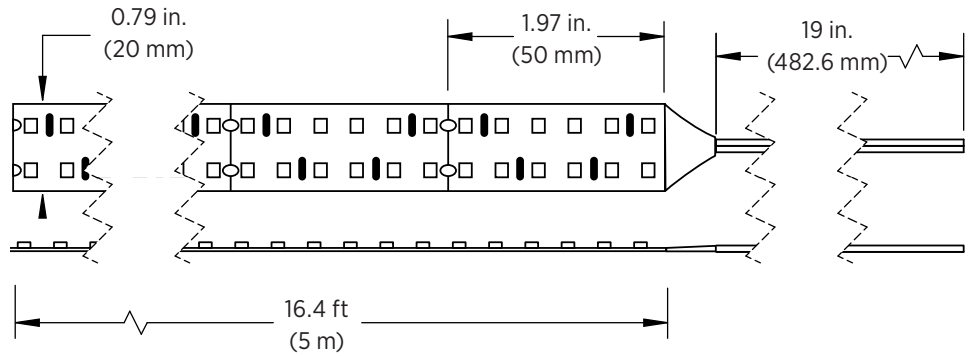
Eco LED Strip Lights

3528 Strip Specifications

DIMENSIONAL DRAWINGS

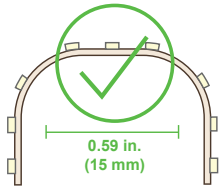
STN-AxK80-B12A-20D5M-24V

- 32.8 ft (10 m) max run



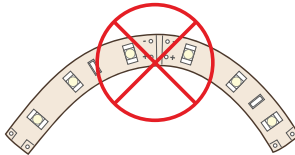
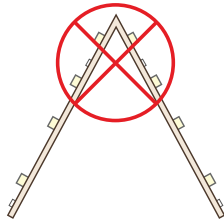
Note: The strip height for all strips shown is 0.08 in. (2 mm).

STRIP FLEXIBILITY



Bends less than 15mm will damage circuit traces and void warranty.

Bending strips at sharp angles will damage circuit traces and void warranty.



Bending strips on horizontal plane will damage circuit traces and void warranty.

NOTES



Specifications are subject to change without notice.

T 314.743.3067

F 314.972.6202

email: commercial-sales@superbrightleds.com

www.superbrightleds.com/cat/industrial-led-lighting/

