

**Important: Read all instructions prior to installation.**

## Selectable CCT Round Recessed Down Light



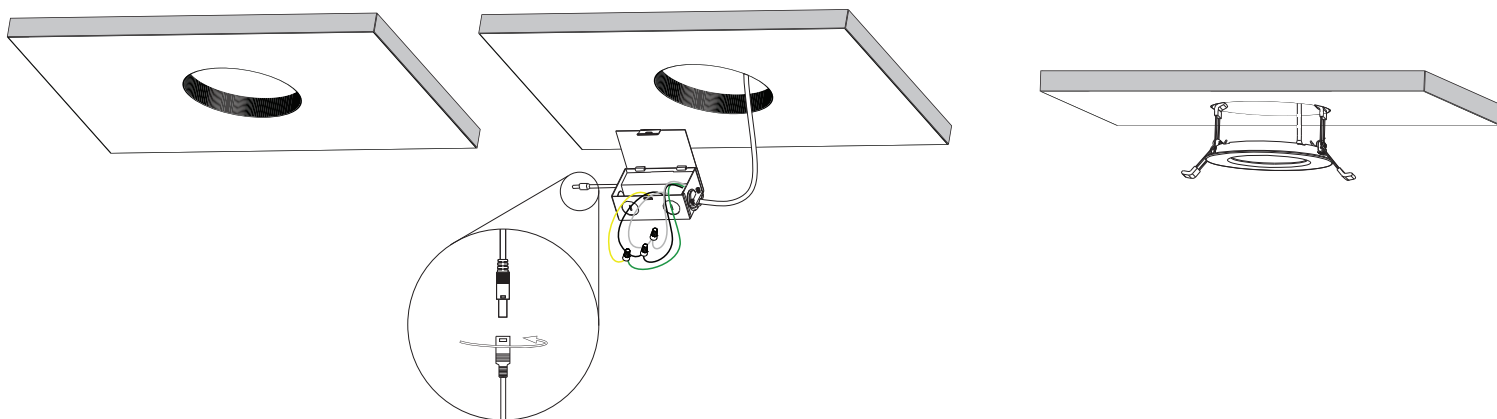
DLS6D-SWA12-120V

### Specifications

Model	DLS4D-SWA9-120V	DLS6D-SWA12-120V
Voltage	120 VAC	
Wattage	9 W	12 W
Beam Angle	110°	
Operating Temperature	-4°–104° F (-20°–40° C)	
IP Rating	IP40	
Dimming	Triac	

### Cutout Installation

1. Cut an appropriate cutout for the intended light.
2. Connect wiring and mount junction box.
3. Set color temperature of light using the switch on the back of the light and connect light to lead from junction box.
4. Fold back spring clamps and insert light into cutout.



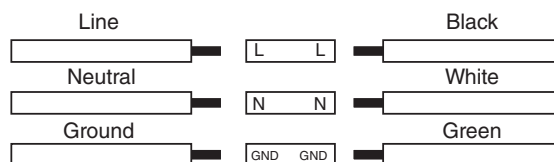
### Safety and Notes

- Product should be installed by a certified electrician in accordance with applicable national, state, and local building and electrical codes.
- To reduce the risk of electric shock, ensure that main power source and circuit breakers are switched off before performing any installation or wiring procedures.
- Avoid looking directly into lamp when illuminated.
- Ensure all mounts are securely attached and will support weight of the fixture. Failure to properly support the fixture may result in damage or injury, for which the manufacturer does not assume responsibility.

### Included Parts

- 1 - Round LED Panel Light
- 1 - Driver Box

### Wiring Diagram



Model	DLS4D-SWA9-120V	DLS6D-SWA12-120V
Hole Size	4.5"	6.25"