

FEATURES

- 12 or 24 VDC input available
- 80+ CRI
- LED lifetime of 50,000 hours (L70)
- 10 mm strip width
- 3M adhesive backing
- Operating temperature of -4°-113° F (-20°-45° C)
- IP20 environmental rating

APPLICATIONS

Some common applications include sign lighting, bias lighting, cove lighting, task lighting, backlighting, accent lighting, and under cabinet lighting.

AVAILABLE VERSIONS

12 VDC

STN-H80-B6A-10C5M-12V

24 VDC

STN-H80-B12A-10C5M-24V

ACCESSORIES

Power Supplies



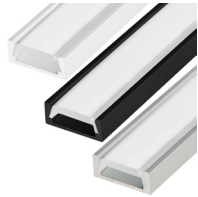
Strip Connectors



Controllers and Switches



Mounting Hardware and Housings



SAMPLE PART NUMBER BREAKDOWN

STN-H80-B12A-10C5M-24V

FAMILY / CATEGORY / COLOR			LED TYPE / SEGMENT		IP RATING	SIZE / DENSITY / VOLTAGE			
STN Strip Type	H Strip Type	80 CRI	B LED Type	12 LED/Segment	A IP Rating	10 Strip Width	C Density	5M Length	24V Voltage
STN: Non-weatherproof	H: Variable White	80: 80-84	B: 3528	6: 6 LED/seg 12: 12 LED/seg	A: IP20	10: 10 mm	C: 120 LEDs/m	5M: 16.4 ft (5 m)	12V: 12 V 24V: 24 V

SPECIFICATIONS

Model	STN-H80-B6A-10C5M-12V	STN-H80-B12A-10C5M-24V
Power Consumption	69 W (total for 5 m)	
Current Draw	350 mA /ft	175 mA /ft
Brightness	350 lm/ft	
Efficacy	83 lm/W	
Beam Angle	120°	
Max Run	16.4 ft (5 m)	32.8ft (10 m)



T 314.743.3067

F 314.972.6202

email: commercial-sales@superbrightleds.com

www.superbrightleds.com/cat/industrial-led-lighting/

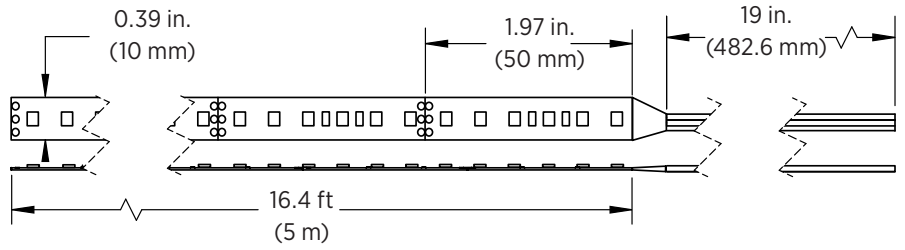


Specifications are subject to change without notice.

DIMENSIONAL DRAWINGS

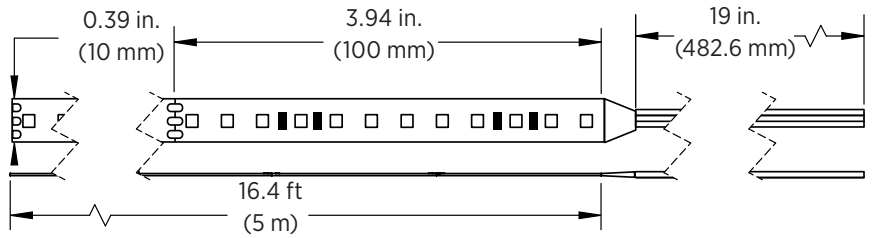
STN-H80-B6A-10C5M-12V

- 16.4 ft (5 m) max run



STN-H80-B12A-10C5M-24V

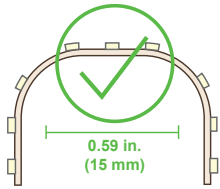
- 32.8 ft (10 m) max run



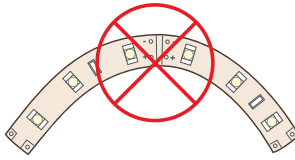
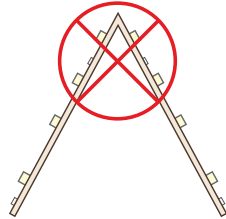
Note: The strip height for all strips shown is 0.08 in. (2 mm).

STRIP FLEXIBILITY

Bending strips at sharp angles will damage circuit traces and void warranty.



Bends less than 15mm will damage circuit traces and void warranty.



Bending strips on horizontal plane will damage circuit traces and void warranty.

NOTES



Specifications are subject to change without notice.

T 314.743.3067

F 314.972.6202

email: commercial-sales@superbrightleds.com

www.superbrightleds.com/cat/industrial-led-lighting/

