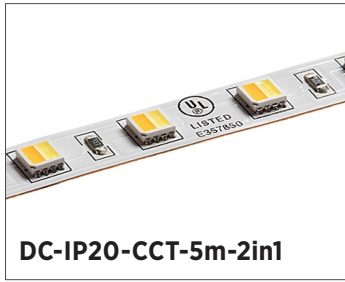


## Dynamic LED Strip Lights

3528 Strip Specifications

Project \_\_\_\_\_

Date \_\_\_\_\_ Type \_\_\_\_\_



**DC-IP20-CCT-5m-2in1**

### FEATURES

- 24 VDC input available
- 80+ CRI
- LED lifetime of 50,000 hours (L70)
- 12 mm strip width
- 3M adhesive backing
- Operating temperature of -4°-113° F (-20°-45° C)
- IP20 environmental rating

### APPLICATIONS

Some common applications include sign lighting, bias lighting, cove lighting, task lighting, backlighting, accent lighting, and under cabinet lighting.

### AVAILABLE VERSIONS

- STN-H80-A6A-10B5M-24V

### ACCESSORIES

Power Supplies



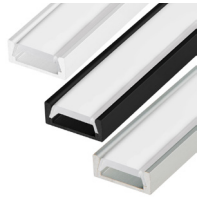
Strip Connectors



Controllers and Switches



Mounting Hardware and Housings



### SAMPLE PART NUMBER BREAKDOWN

## STN-H80-A6A-10B5M-24V

FAMILY / CATEGORY / COLOR			LED TYPE / SEGMENT		IP RATING	SIZE / DENSITY / VOLTAGE			
<b>STN</b> Strip Type	<b>H</b> Strip Type	<b>80</b> CRI	<b>A</b> LED Type	<b>6</b> LED/Segment	<b>A</b> IP Rating	<b>10</b> Strip Width	<b>B</b> Density	<b>5M</b> Length	<b>24V</b> Voltage
STN: Non-weatherproof	H: Variable White	80: 80-84	A: 5050	6: 6 LED/seg	A: IP20	10: 10 mm	C: 120 LEDs/m	5M: 16.4 ft (5 m)	24V: 24 V

### SPECIFICATIONS

Model	STN-H80-A6A-10B5M-24V
Power Consumption	69 W (total for 5 m)
Current Draw	175 mA /ft
Brightness	335 lm/ft
Efficacy	80 lm/W
Beam Angle	120°
Max Run	32.8 ft (10 m)



T 314.743.3067

F 314.972.6202

email: commercial-sales@superbrightleds.com

www.superbrightleds.com/cat/industrial-led-lighting/

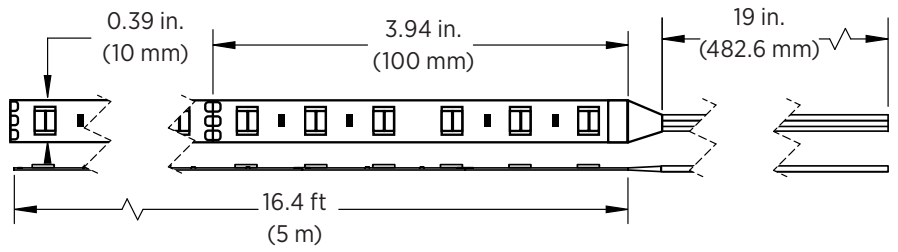


Specifications are subject to change without notice.

#### DIMENSIONAL DRAWINGS

STN-H80-A6A-10B5M-24V

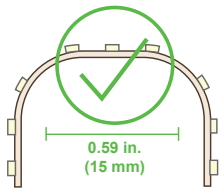
- 32.8 ft (10 m) max run



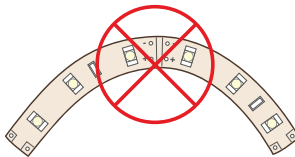
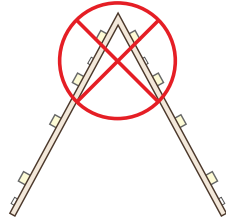
Note: The strip height for all strips shown is 0.08 in. (2 mm).

#### STRIP FLEXIBILITY

Bending strips at sharp angles will damage circuit traces and void warranty.



Bends less than 15mm will damage circuit traces and void warranty.



Bending strips on horizontal plane will damage circuit traces and void warranty.

#### NOTES



Specifications are subject to change without notice.

T 314.743.3067

F 314.972.6202

email: [commercial-sales@superbrightleds.com](mailto:commercial-sales@superbrightleds.com)

[www.superbrightleds.com/cat/industrial-led-lighting/](http://www.superbrightleds.com/cat/industrial-led-lighting/)

