

RGB Single Color Indoor Quad Row RGB Flexible Light Strips

Part Number: 4NFLS-x12960-24V



Features

Features **2835SMD** non-weatherproof high powered LEDs

24 VDC operating voltage

CRI light available in red, green, and blue options.

LED Light Strip features **adhesive backing** & **cuttable 24-LED segments** for easy installation

180° optics improve visibility with wider area illumination

Applications include: Accent lighting, wall washing, theater lighting, stage lighting, sign backlighting, cabinet lighting, under-cabinet lighting, bias lighting, showcase lighting, trade show lighting, or for other indoor applications where space is limited.



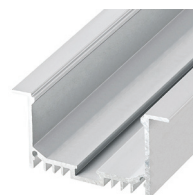
Accessories



Remote Dimmers & Switches



Power Supplies






Aluminum Profiles

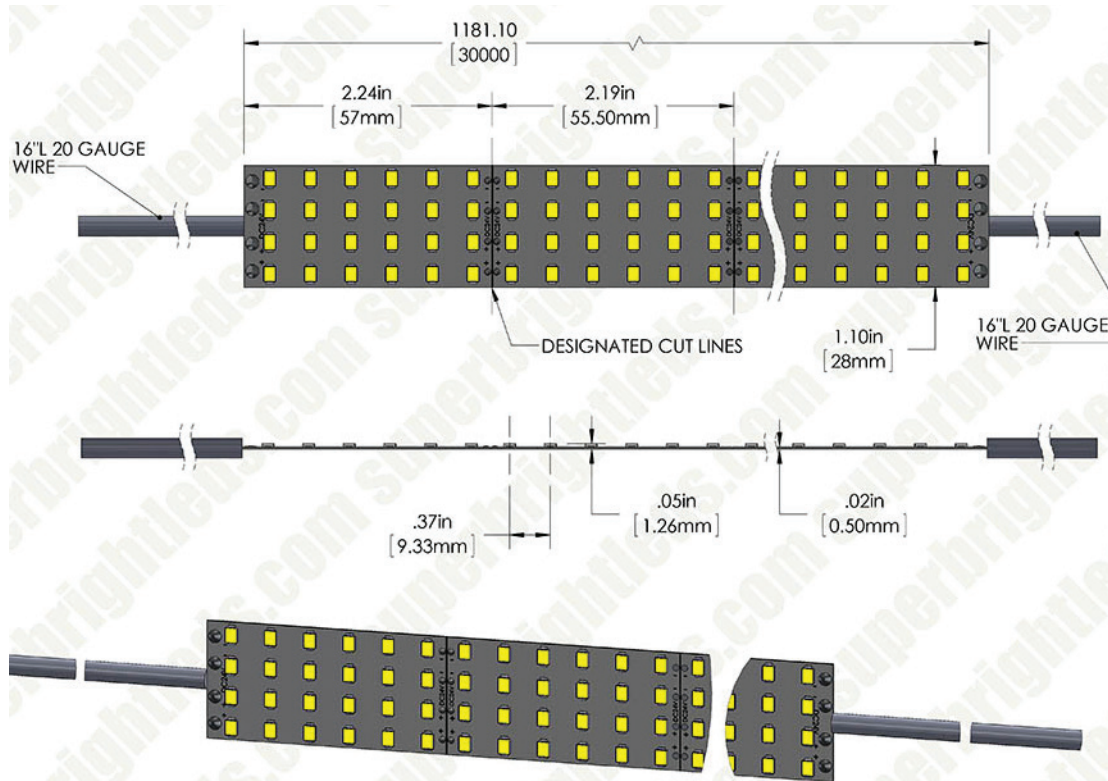
General Product Specifications

Beam Angle	180 Degree	Type	Quad-Row Flexible Light Strip
LED Type	2835 SMD	Color	Red, Green & Blue
Operating Voltage Range	24 VDC	Life Span	≥40,000 Hrs
LEDs Per Segment	24	Strip Width	28mm
Water Resistance	Non-Weatherproof	Strip Finish	White
Polarity Sensitive	Yes		
Wire Length	13.5 inch		

Product Specifications

	Emitting Color	Wavelength	Intensity Per Foot	Current Draw	
	Blue	465 K	368 lm/ft	115 mA	
	Green	524 K	2940 lm/ft	120 mA	
	Red	632 K	579 lm/ft	120 mA	

Dimensions



Maximum Flexibility Precaution

